

Disaster Prevention Information

— Various information is available for your evacuation and disaster reduction —

Evacuation Information in Time of Disaster

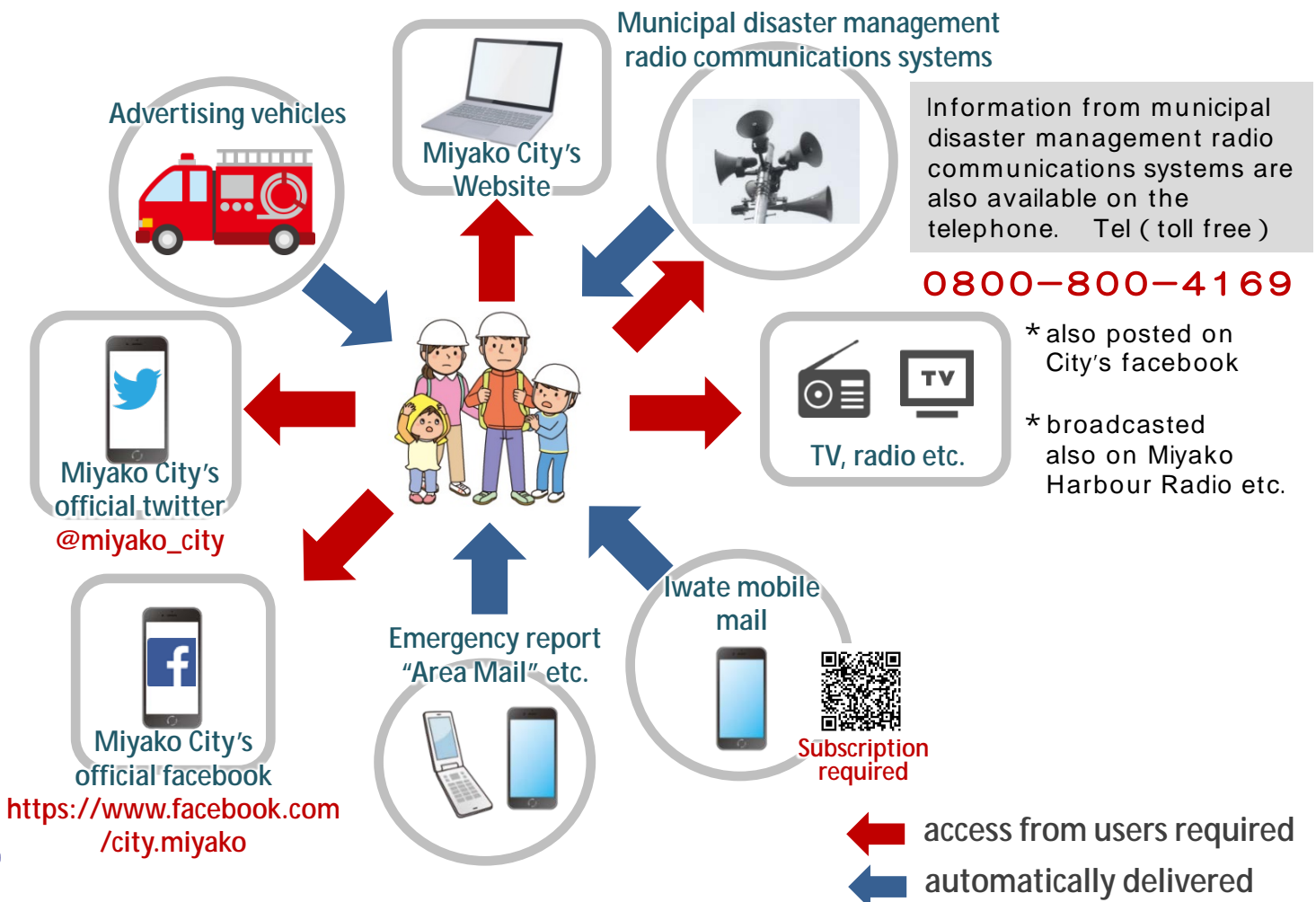
Evacuation information is issued by Miyako City in case of potential disasters. In the below table, lower rows are more urgent than upper ones. Note that they are not always issued in a sequence.

Evacuation Information	Actions to be taken
Notice to Prepare for Evacuation / Commence Evacuation for Elderly People etc.	People who take time to evacuate: commence evacuation. Elderly or disabled people, infants, and others, as well as their accompanying persons should commence evacuation, since special support is required or it takes a while for them to evacuate. Others: prepare to evacuate. Others should prepare to evacuate.
Evacuation Advisory	Commence evacuation immediately.
Evacuation Order (urgent)	Evacuate urgently as the risk of damage is imminent.



How to Get Disaster Prevention Information

Disaster management information issued by JMA or Iwate Prefectural government are emitted through city government or other measures. When you get tsunami forecast or evacuation information, please evacuate immediately.



Disaster Prevention Information

— Various information is available for your evacuation and disaster reduction —

How to Get Information through Data Broadcasting

Through digital data broadcasting, various disaster prevention information is available, including weather warnings and advisories, evacuation information issued areas, operating shelters, etc. Take time to learn how to obtain information to prepare for disasters.

[example] How to obtain river water level information during flood through data broadcasting.

【steps】

Turn to NHK on TV, then push 「d」 button on TV remote controller.

From the top menu of NHK, select 「Disaster prevention and living information」.

Select 「River water level and rainfall」.



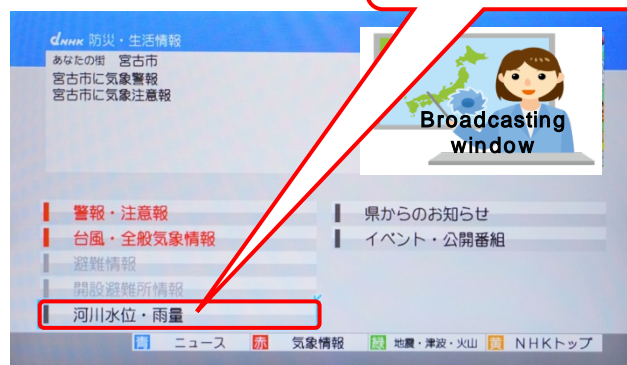
d button

Select 「Disaster prevention and living information」



Top menu of NHK data broadcasting

Select 「River water level and rainfall」



Top menu of 「Disaster prevention and living information」

《water level information》
If the water level is over 「flood advisory level」, the names are shown in yellow.
Switch water level observatory sites by 「left/right」 button. Selected site is shown in orange.



《area displayed》
Displayed river names etc. is shown.
To switch to other areas, press 「up/down」 buttons on the remote controller.



《Legend for water level》

- Flood risk level (Reference for issuing evacuation advisory etc.)
- Evacuation decision level (Reference for issuing notice to prepare for evacuation / commence evacuation for elderly people etc.)
- Flood advisory level (Reference for flood fighting corps to take action)
- Flood fighting corps standby level (Water level for flood management authorities to stand by)

River name	Observatory name	Flood risk level	Evacuation decision level	Flood advisory level	Flood fighting corps standby level
Hei Riv.	Sentoku	3.90m	3.70m	3.10m	2.50m
Tsugaruishi Riv.	Shinmachi	3.00m	2.70m	2.70m	2.10m



Emergency Warning, Warning, and Advisory

Emergency warning, warning, and advisory, shown in the blow table, are issued by the Japan Meteorological Agency (JMA) to prevent or mitigate disasters. Please pay special attention to weather information when severe rain is predicted.

Types	Criteria for issuance	Actions to be taken
Heavy rain emergency warning	Heavy rainfall of an intensity observed only once every few decades is forecasted. There is a significant large risk of serious disaster occurring	Act immediately to save lives.
Heavy rain warning	There is a risk that heavy rain will cause serious disasters.	Pay attention to disaster information, and prepare for evacuation.
Heavy rain advisory	There is the risk that heavy rain will cause disasters.	Pay attention to weather information
Record-time heavy rain information	Heavy rain of 100 mm/hr or over is observed or analyzed.	
Sediment disaster alert bulletin	A very high risk of sediment disaster arises according to observed rainfall and disaster records etc.	Commence evacuation immediately after evacuation advisory etc. is issued.

Information Sources for Sediment Disasters and River Flooding

Information on Disaster Prevention and Disasters in Miyako City
 Latest disaster conditions, associated information on weather and rivers, other various information on disaster management are available.
 At 『Miyako City Website』, click 「**Disaster Information**」
 (<http://www.city.miyako.iwate.jp/>)

Iwate Disaster Prevention Information Portal (Iwate Prefectural)
 ➡ **Warnings and advisories**
 ➡ **Real-time information**
 Not only warnings and advisories, you can browse real-time information on weather, rivers, sediment disasters, traffic information etc.
 Iwate Disaster Prevention Information Portal <http://iwate.force.com/>

Layering Hazard Map (Ministry of Land, Infrastructure, Transport and Tourism (MLIT))
 Estimated inundation areas, roads, hazardous areas, elevation etc. can be layered on a map or an aerial photo so that you can browse seamlessly.
 In 『MLIT Hazard Map Portal』, click 「**Layering Hazard Map**」
 (<https://disaportal.gsi.go.jp/>)