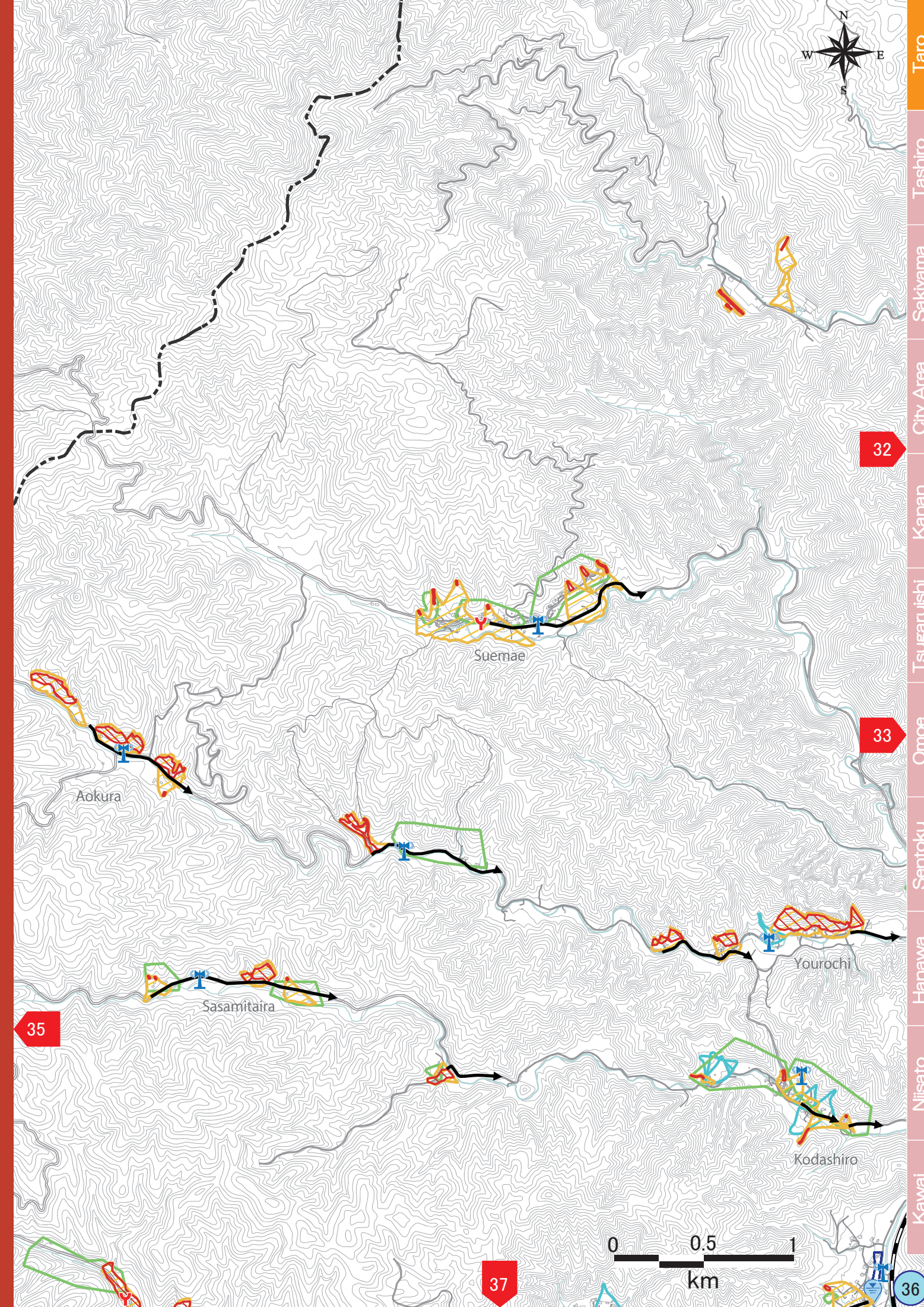
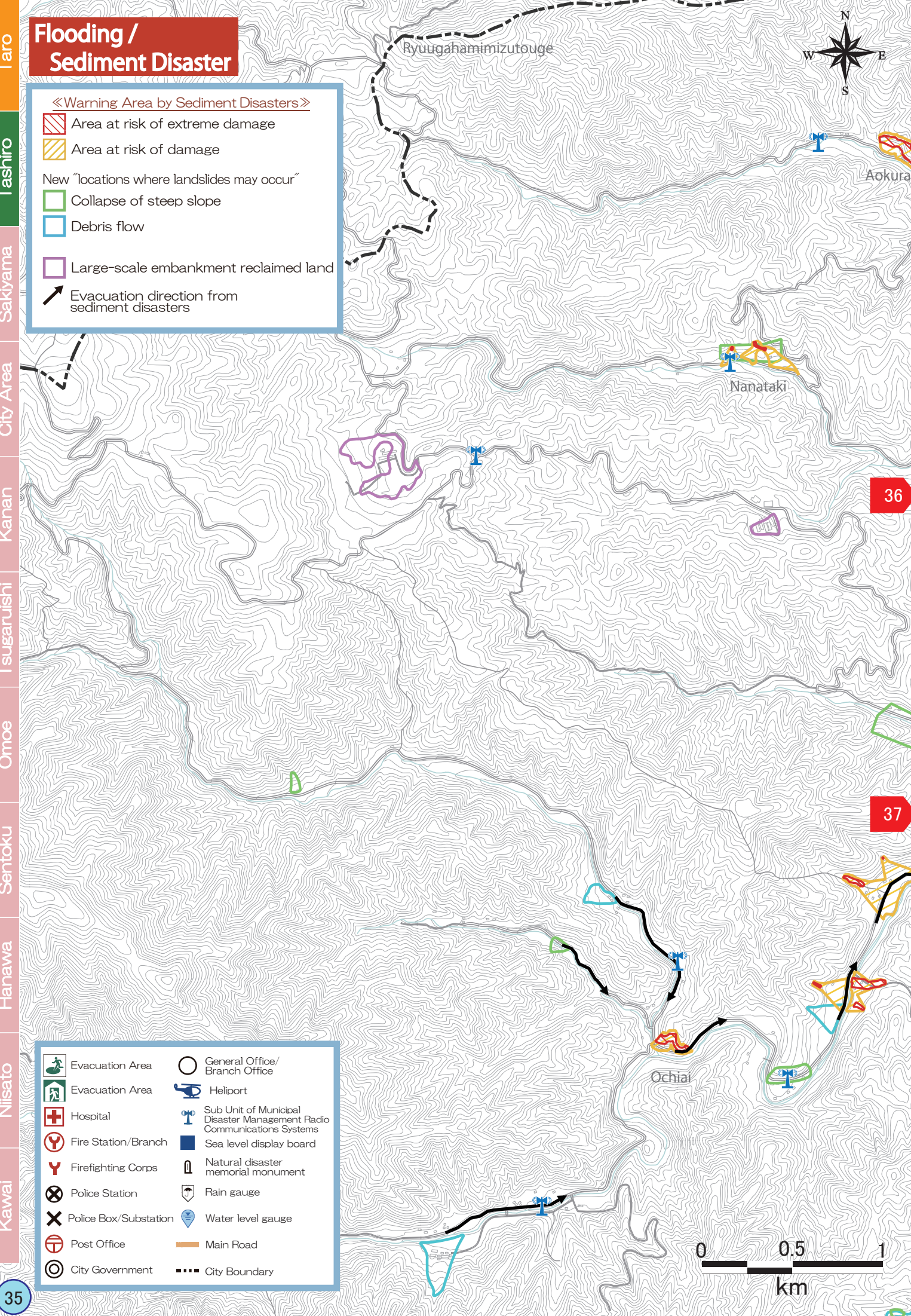


Flooding / Sediment Disaster

«Warning Area by Sediment Disasters»

- Area at risk of extreme damage
- Area at risk of damage
- New "locations where landslides may occur"
- Collapse of steep slope
- Debris flow
- Large-scale embankment reclaimed land
- Evacuation direction from sediment disasters

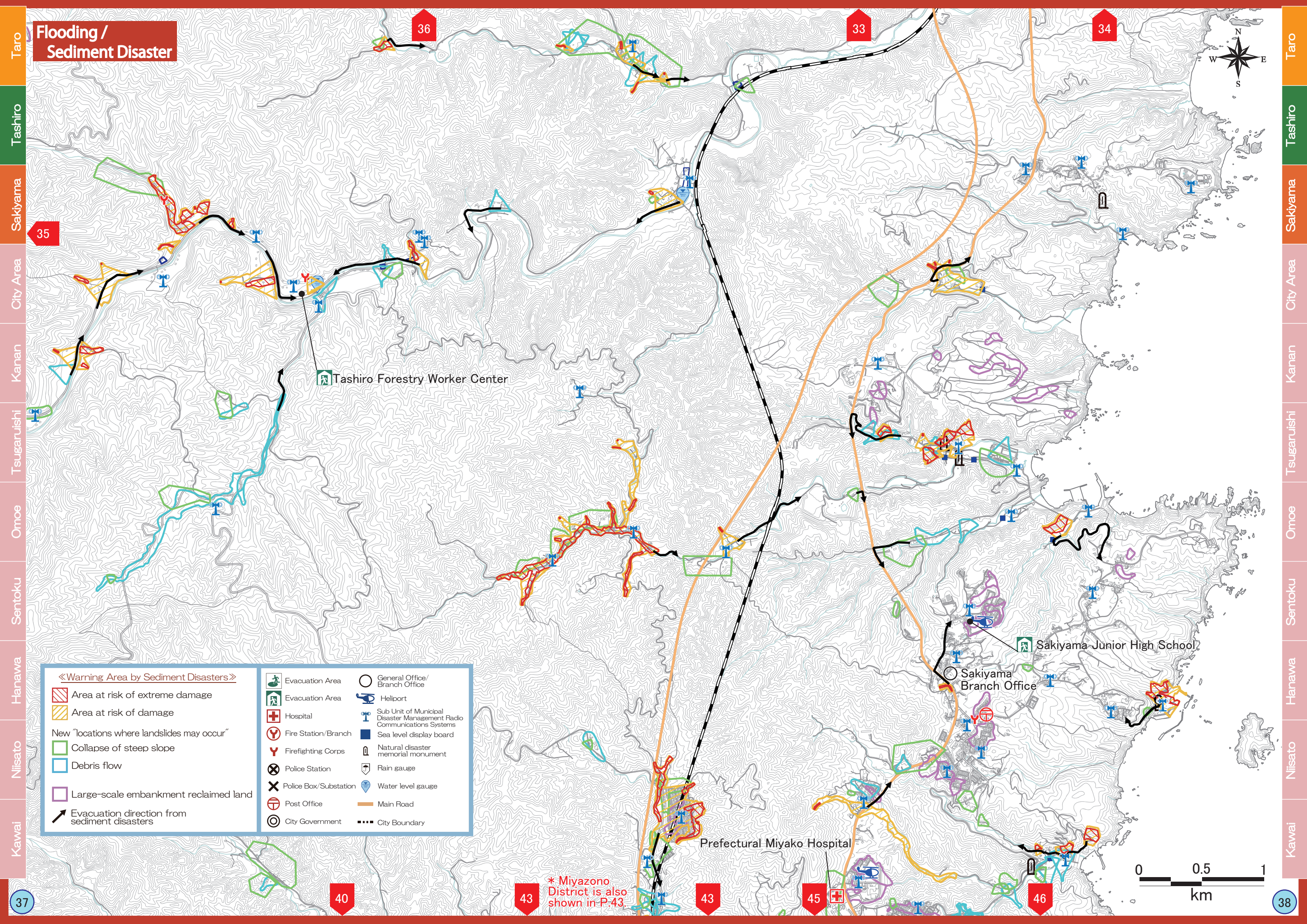
	Evacuation Area		General Office/ Branch Office
	Evacuation Area		Heliport
	Hospital		Sub Unit of Municipal Disaster Management Radio Communications Systems
	Fire Station/Branch		Sea level display board
	Firefighting Corps		Natural disaster memorial monument
	Police Station		Rain gauge
	Police Box/Substation		Water level gauge
	Post Office		Main Road
	City Government		City Boundary



Taro
Tashiro
Sakiyama
City Area
Kanan
Tsugaruishi
Omoe
Sentoku
Hanawa
Nisato
Kawai

Taro
Tashiro
Sakiyama
City Area
Kanan
Tsugaruishi
Omoe
Sentoku
Hanawa
Nisato
Kawai

Flooding / Sediment Disaster



35

36

33

34

Tashiro Forestry Worker Center

Sakiyama Junior High School

Sakiyama Branch Office

Prefectural Miyako Hospital

«Warning Area by Sediment Disasters»

	Area at risk of extreme damage		Evacuation Area		General Office/ Branch Office
	Area at risk of damage		Evacuation Area		Heliport
	New "locations where landslides may occur"		Hospital		Sub Unit of Municipal Disaster Management Radio Communications Systems
	Collapse of steep slope		Fire Station/Branch		Sea level display board
	Debris flow		Firefighting Corps		Natural disaster memorial monument
	Large-scale embankment reclaimed land		Police Station		Rain gauge
	Evacuation direction from sediment disasters		Police Box/Substation		Water level gauge
			Post Office		Main Road
			City Government		City Boundary



* Miyazono District is also shown in P.43.