

Flooding / Sediment Disaster

«Inundation range and depth due to flooding»

Inundation depth due to planned rainfall

under 0.5m	5 m ~ 10m
0.5m ~ 3 m	10m ~ 20m
3 m ~ 5 m	20m and over

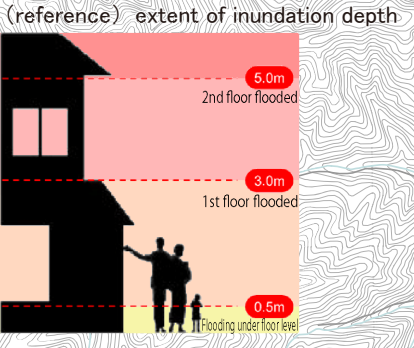
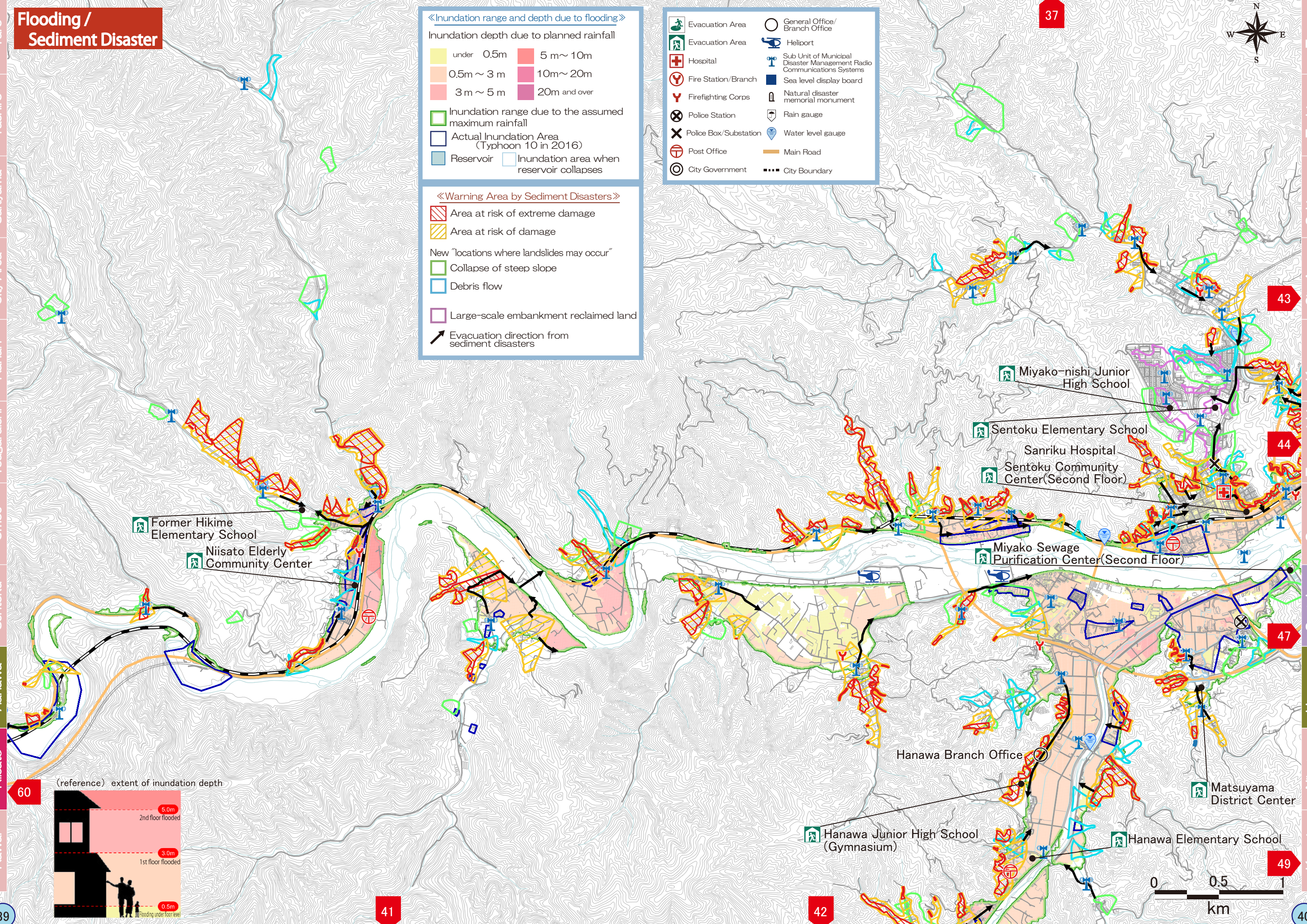
Inundation range due to the assumed maximum rainfall

- Actual Inundation Area (Typhoon 10 in 2016)
- Reservoir
- Inundation area when reservoir collapses

«Warning Area by Sediment Disasters»

- Area at risk of extreme damage
- Area at risk of damage
- New "locations where landslides may occur"
- Collapse of steep slope
- Debris flow
- Large-scale embankment reclaimed land
- Evacuation direction from sediment disasters

Evacuation Area	General Office/ Branch Office
Evacuation Area	Heliport
Hospital	Sub Unit of Municipal Disaster Management Radio Communications Systems
Fire Station/Branch	Sea level display board
Firefighting Corps	Natural disaster memorial monument
Police Station	Rain gauge
Police Box/Substation	Water level gauge
Post Office	Main Road
City Government	City Boundary



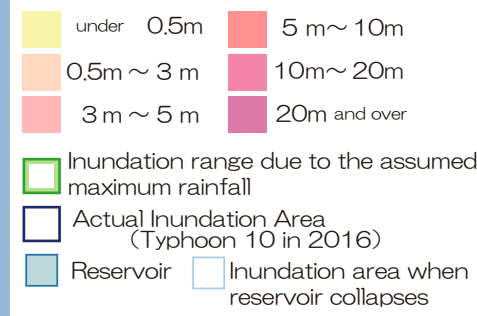
Taro
Tashiro
Sakiyama
City Area
Kanan
Tsugaruishi
Omoe
Sentoku
Hanawa
Niisato
Kawai

Taro
Tashiro
Sakiyama
City Area
Kanan
Tsugaruishi
Omoe
Sentoku
Hanawa
Niisato
Kawai

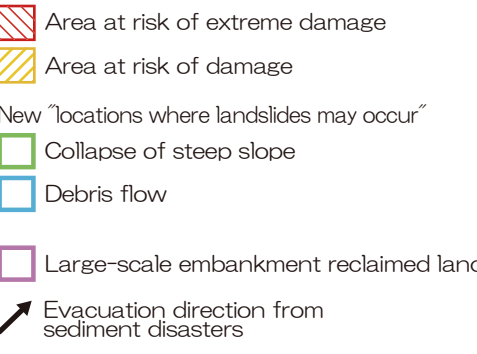
Flooding / Sediment Disaster

《Inundation range and depth due to flooding》

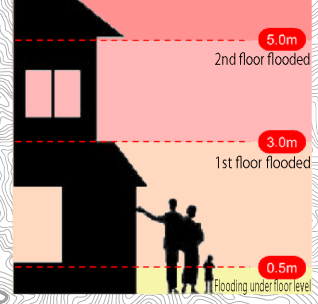
Inundation depth due to planned rainfall



《Warning Area by Sediment Disasters》



(reference) extent of inundation depth

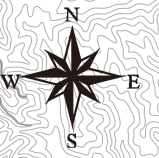


60



Nagasawa Rural Center

Hanawa Elementary School



49

51

53

42

Taro
Tashiro
Sakiyama
City Area
Kanan
Tsugaruishi
Omoie
Sentakku
Hanawa
Nisato
Kawai

Taro
Tashiro
Sakiyama
City Area
Kanan
Tsugaruishi
Omoie
Sentakku
Hanawa
Nisato
Kawai