

Flooding / Sediment Disaster

38

45

«Inundation range and depth due to planned rainfall»

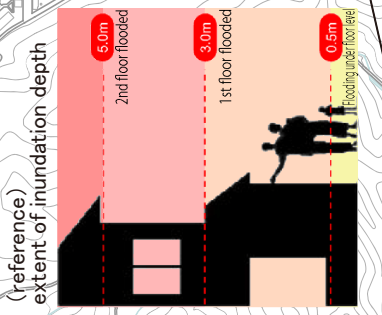
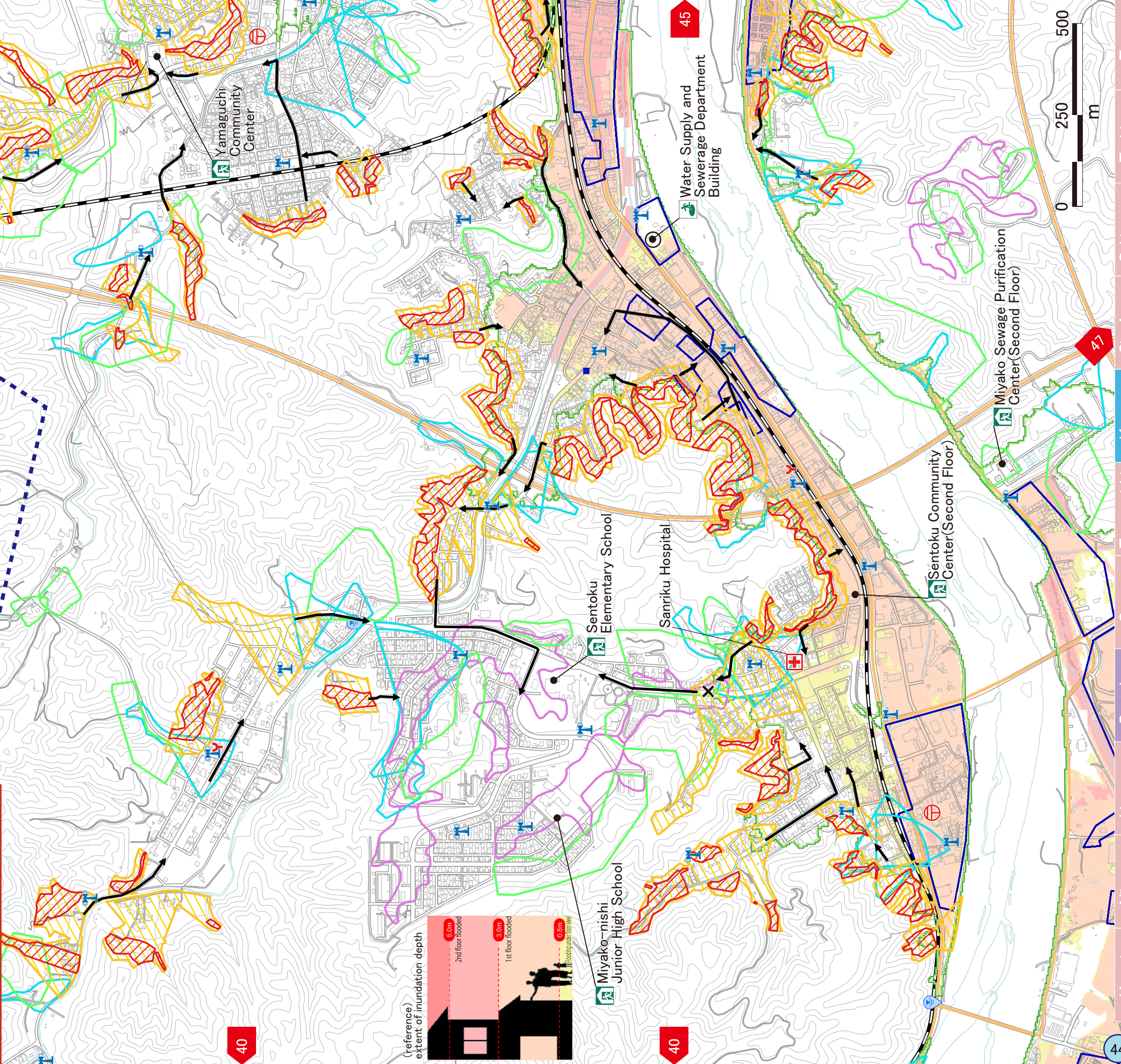
Inundation depth due to planned rainfall	5 m ~ 10m	Inundation range due to the assumed maximum rainfall
under 0.5m	10m ~ 20m	
0.5m ~ 3 m	20m and over	Actual Inundation Area (Typhoon 10 in 2016)
3 m ~ 5 m		

«Warning Area by Sediment Disasters»

- Area at risk of extreme damage
- Area at risk of damage
- New "locations where landslides may occur"
- Collapse of steep slope
- Debris flow
- Large-scale embankment reclaimed land
- Evacuation direction from sediment disasters

Legend:

- Evacuation Area
- Evacuation Area
- Hospital
- Fire Station/Branch
- Firefighting Corps
- Police Station
- Police Box/Substation
- Post Office
- City Government
- General Office/Branch Office
- Helicopter
- Sub Unit of Municipal Disaster Management Radio Communications Systems
- Sea level display board
- Natural disaster memorial monument
- Rain gauge
- Water level gauge
- Main Road
- City Boundary



Flooding / Sediment Disaster

Water Supply and Sewerage Department Building

The First Junior High School

Former Fujiwara Elementary School

Miyako City Government Office <Citizens Communication Center>

Koyamada District Center

Sokei Elementary School

Kanan Junior High School

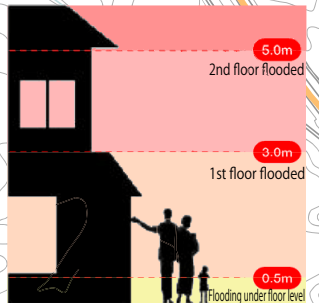
<<Inundation range and depth due to flooding>>

- Inundation depth due to planned rainfall
- under 0.5m
 - 0.5m ~ 3m
 - 3m ~ 5m
 - 5m ~ 10m
 - 10m ~ 20m
 - 20m and over
- Inundation range due to the assumed maximum rainfall
- Actual Inundation Area (Typhoon 10 in 2016)
 - Reservoir
 - Inundation area when reservoir collapses

<<Warning Area by Sediment Disasters>>

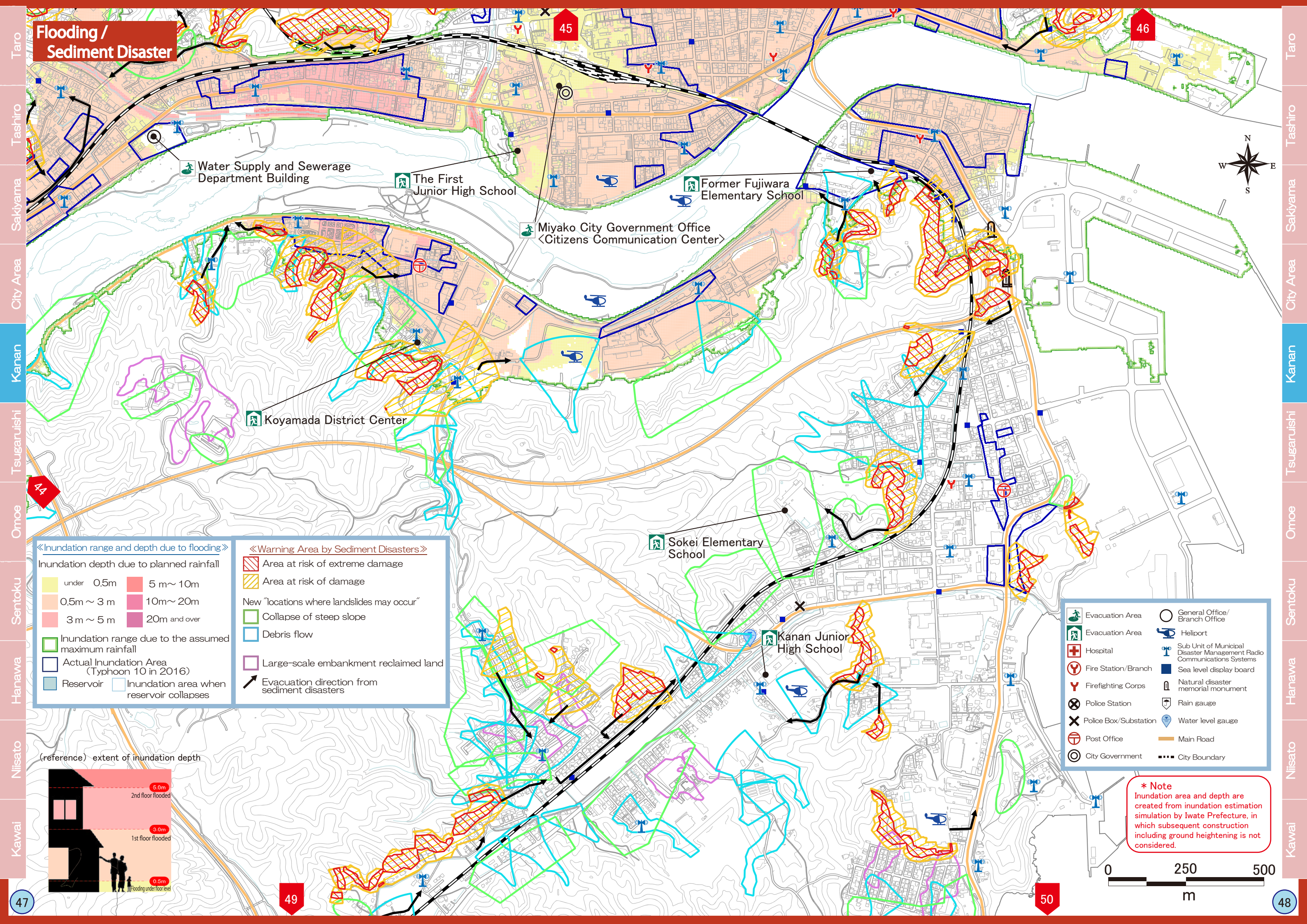
- Area at risk of extreme damage
- Area at risk of damage
- New "locations where landslides may occur"
- Collapse of steep slope
- Debris flow
- Large-scale embankment reclaimed land
- Evacuation direction from sediment disasters

(reference) extent of inundation depth



- Evacuation Area
- Evacuation Area
- Hospital
- Fire Station/Branch
- Firefighting Corps
- Police Station
- Police Box/Substation
- Post Office
- City Government
- General Office/Branch Office
- Heliport
- Sub Unit of Municipal Disaster Management Radio Communications Systems
- Sea level display board
- Natural disaster memorial monument
- Rain gauge
- Water level gauge
- Main Road
- City Boundary

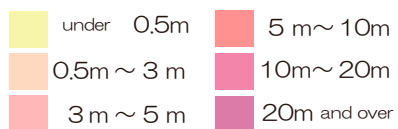
*** Note**
Inundation area and depth are created from inundation estimation simulation by Iwate Prefecture, in which subsequent construction including ground heightening is not considered.



Flooding / Sediment Disaster

«Inundation range and depth due to flooding»

Inundation depth due to planned rainfall



Inundation range due to the assumed maximum rainfall

Actual Inundation Area (Typhoon 10 in 2016)

Reservoir Inundation area when reservoir collapses

- | | |
|-----------------------|--|
| Evacuation Area | General Office/ Branch Office |
| Evacuation Area | Heliport |
| Hospital | Sub Unit of Municipal Disaster Management Radio Communications Systems |
| Fire Station/Branch | Sea level display board |
| Firefighting Corps | Natural disaster memorial monument |
| Police Station | Rain gauge |
| Police Box/Substation | Water level gauge |
| Post Office | Main Road |
| City Government | City Boundary |

«Warning Area by Sediment Disasters»

- Area at risk of extreme damage
- Area at risk of damage
- New "locations where landslides may occur"
- Collapse of steep slope
- Debris flow
- Large-scale embankment reclaimed land
- Evacuation direction from sediment disasters

(reference) extent of inundation depth

