

# Flooding / Sediment Disaster

## «Inundation range and depth due to flooding»

Inundation depth due to planned rainfall

- under 0.5m
- 0.5m ~ 3 m
- 3 m ~ 5 m
- 5 m ~ 10m
- 10m ~ 20m
- 20m and over

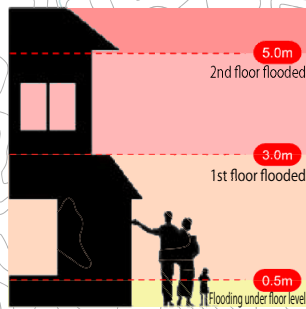
Inundation range due to the assumed maximum rainfall

- Actual Inundation Area (Typhoon 10 in 2016)
- Reservoir
- Inundation area when reservoir collapses

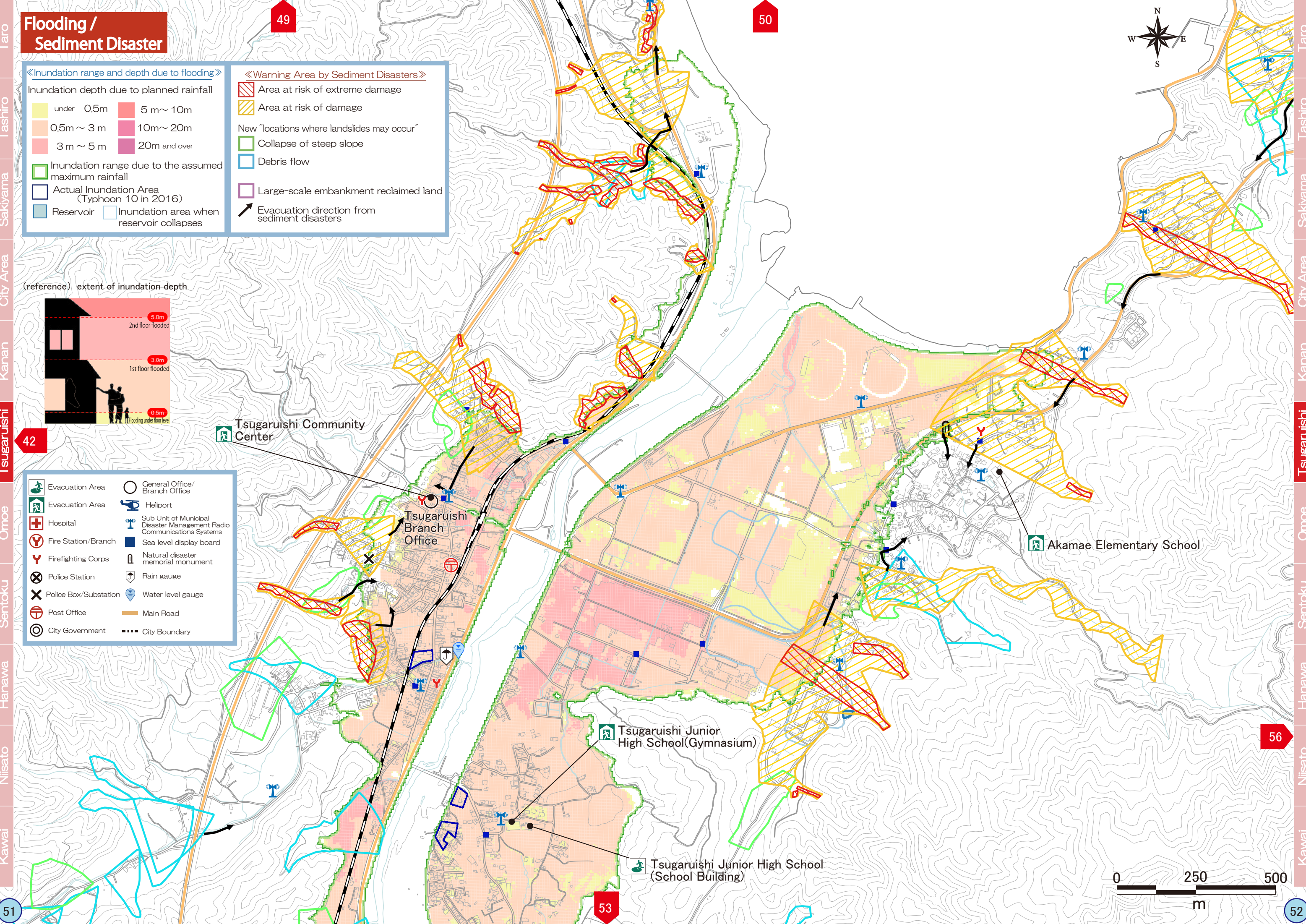
## «Warning Area by Sediment Disasters»

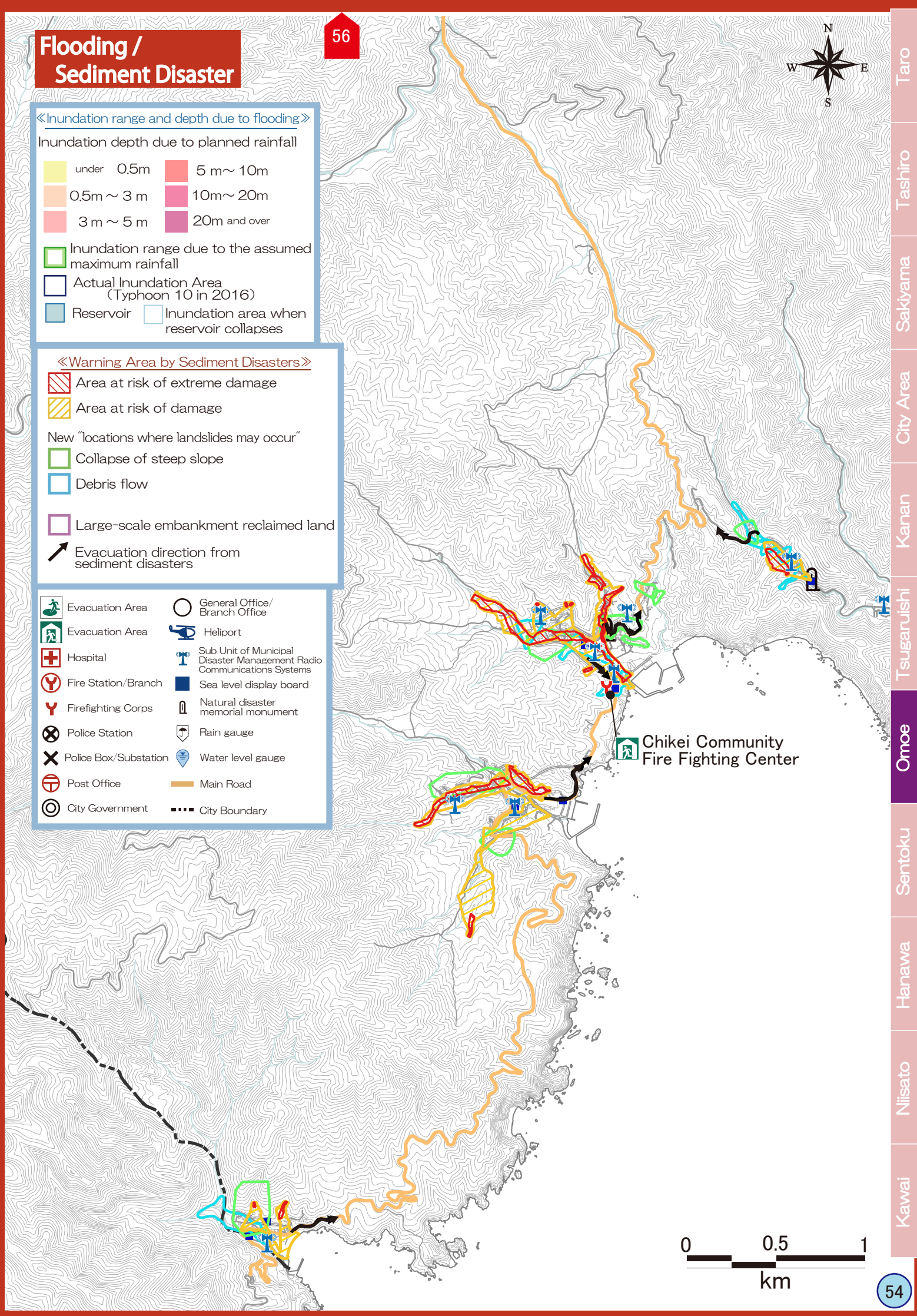
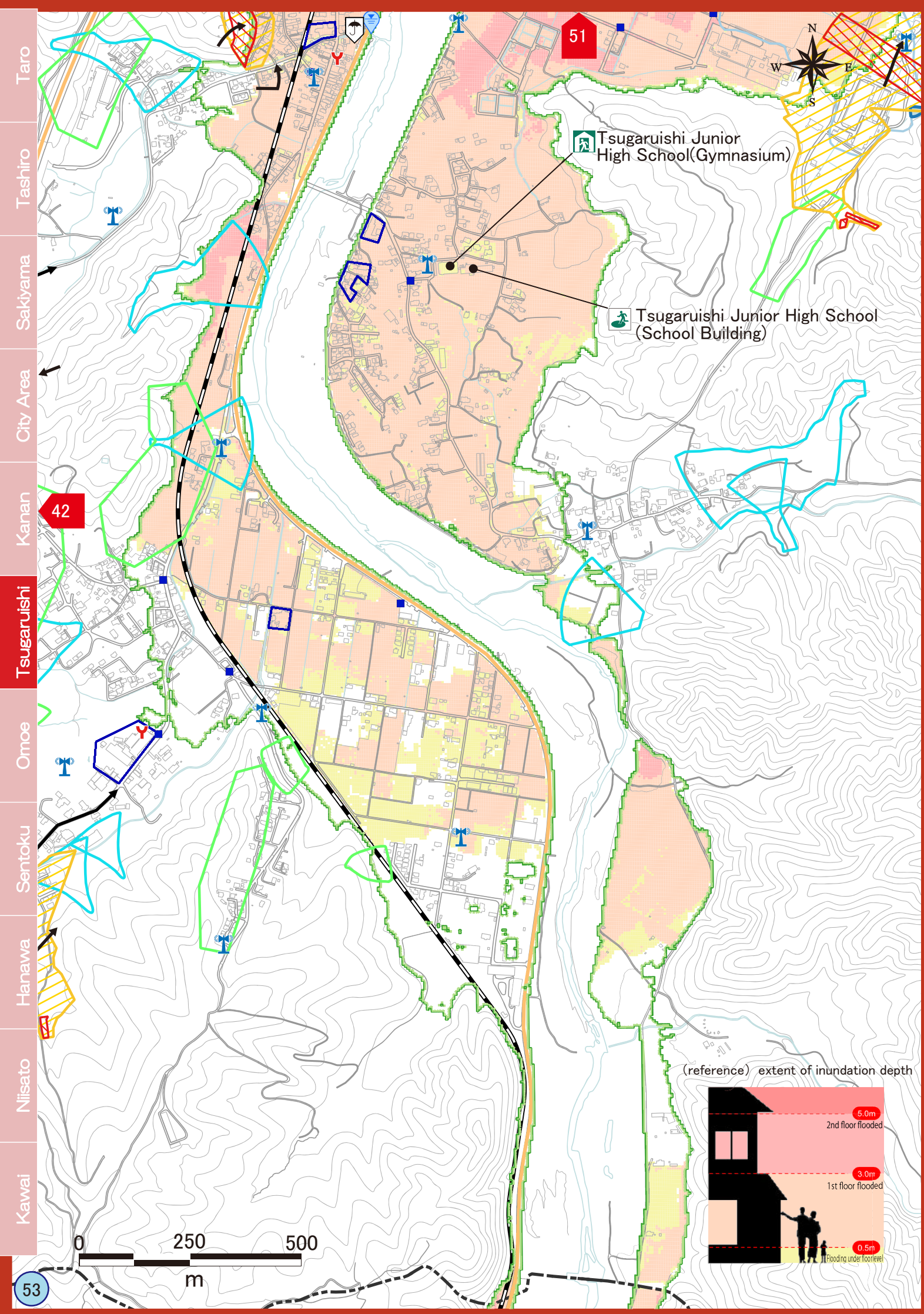
- Area at risk of extreme damage
- Area at risk of damage
- New "locations where landslides may occur"
- Collapse of steep slope
- Debris flow
- Large-scale embankment reclaimed land
- Evacuation direction from sediment disasters

(reference) extent of inundation depth

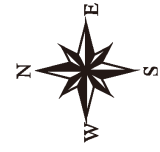


- Evacuation Area
- Evacuation Area
- Hospital
- Fire Station/Branch
- Firefighting Corps
- Police Station
- Police Box/Substation
- Post Office
- City Government
- General Office/Branch Office
- Heliport
- Sub Unit of Municipal Disaster Management Radio Communications Systems
- Sea level display board
- Natural disaster memorial monument
- Rain gauge
- Water level gauge
- Main Road
- City Boundary





# Flooding / Sediment Disaster



	Evacuation Area		General Office/ Branch Office
	Evacuation Area		Helibort
	Hospital		Sub Unit of Municipal Disaster Management Systems
	Fire Station/Branch		Sea level display board
	Firefighting Corps		Natural disaster memorial monument
	Police Station		Rain gauge
	Police Box/Substation		Water level gauge
	Post Office		Main Road
	City Government		City Boundary

	«Warning Area by Sediment Disasters»
	Area at risk of extreme damage
	Area at risk of damage
	New locations where landslides may occur
	Collapse of steep slope
	Debris flow
	Large-scale embankment reclaimed land
	Evacuation direction from sediment disasters

