

# Flooding / Sediment Disaster

«Inundation range and depth due to flooding»

Inundation depth due to planned rainfall

under 0.5m	5 m ~ 10m
0.5m ~ 3 m	10m ~ 20m
3 m ~ 5 m	20m and over

Inundation range due to the assumed maximum rainfall

Actual Inundation Area (Typhoon 10 in 2016)

Reservoir

Inundation area when reservoir collapses

«Warning Area by Sediment Disasters»

Area at risk of extreme damage

Area at risk of damage

New "locations where landslides may occur"

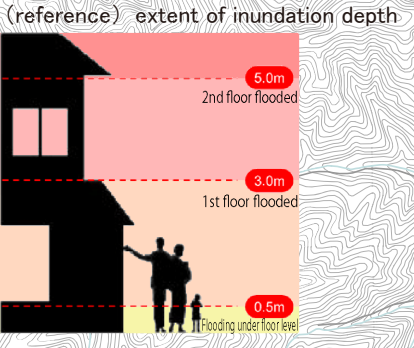
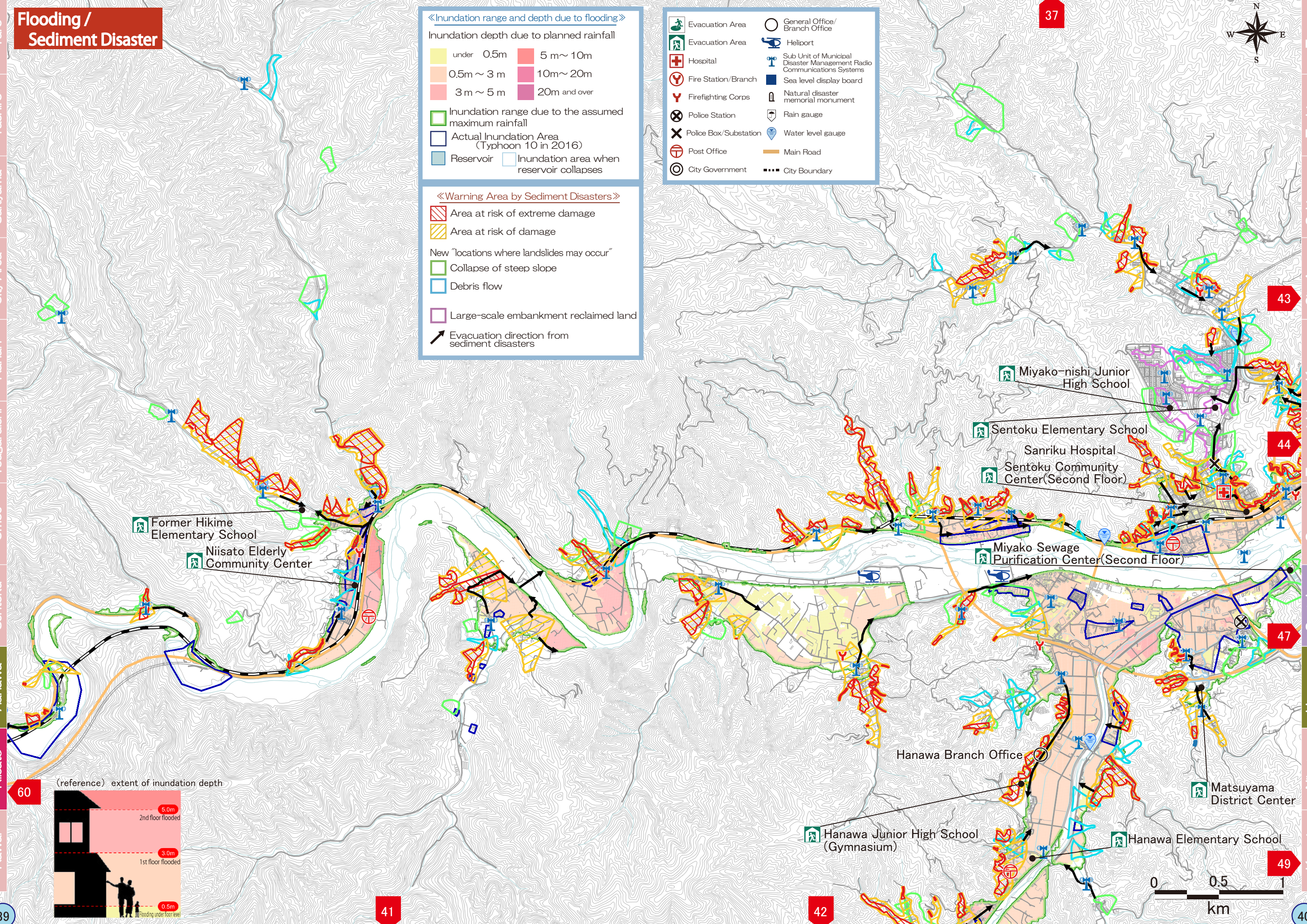
Collapse of steep slope

Debris flow

Large-scale embankment reclaimed land

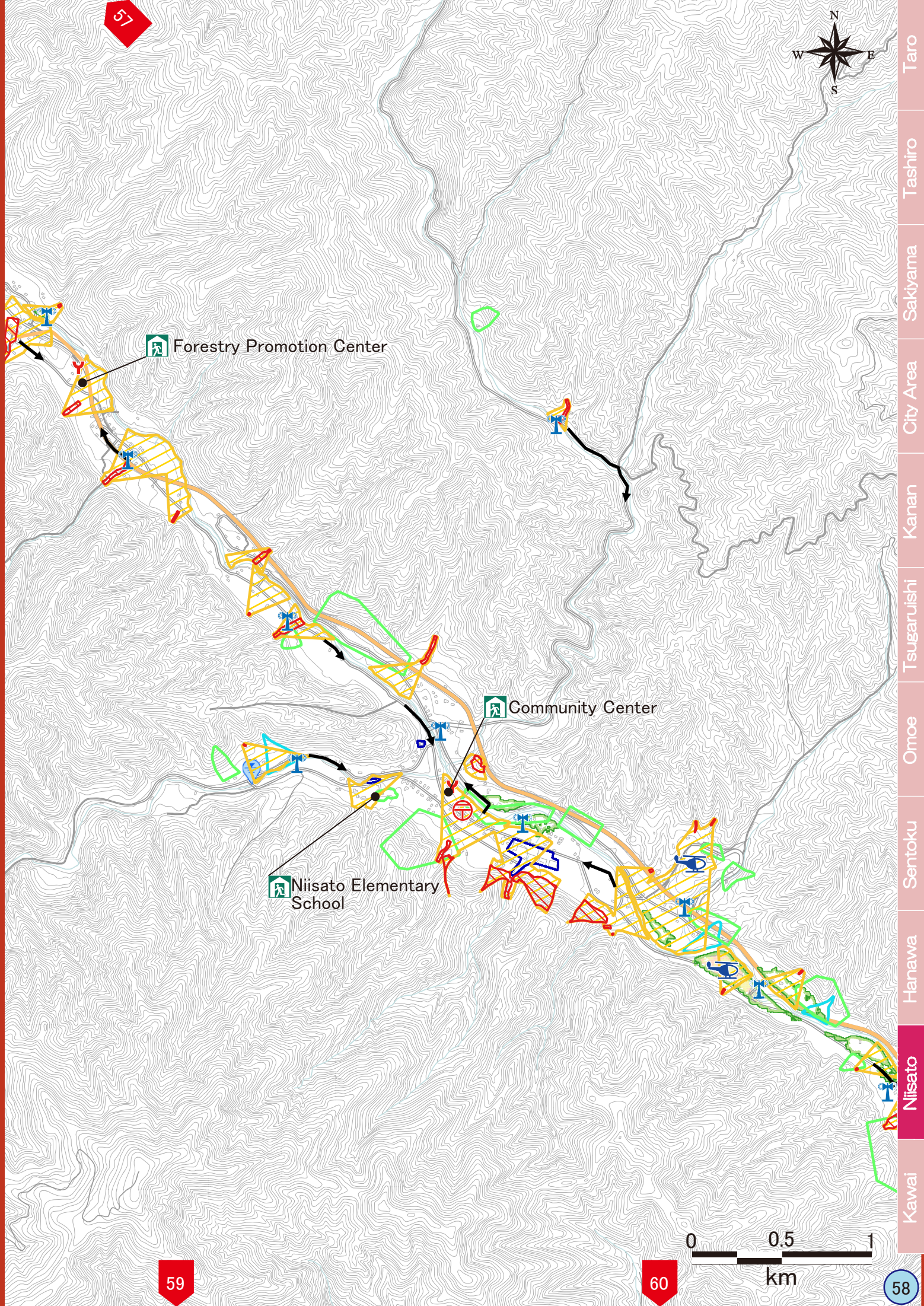
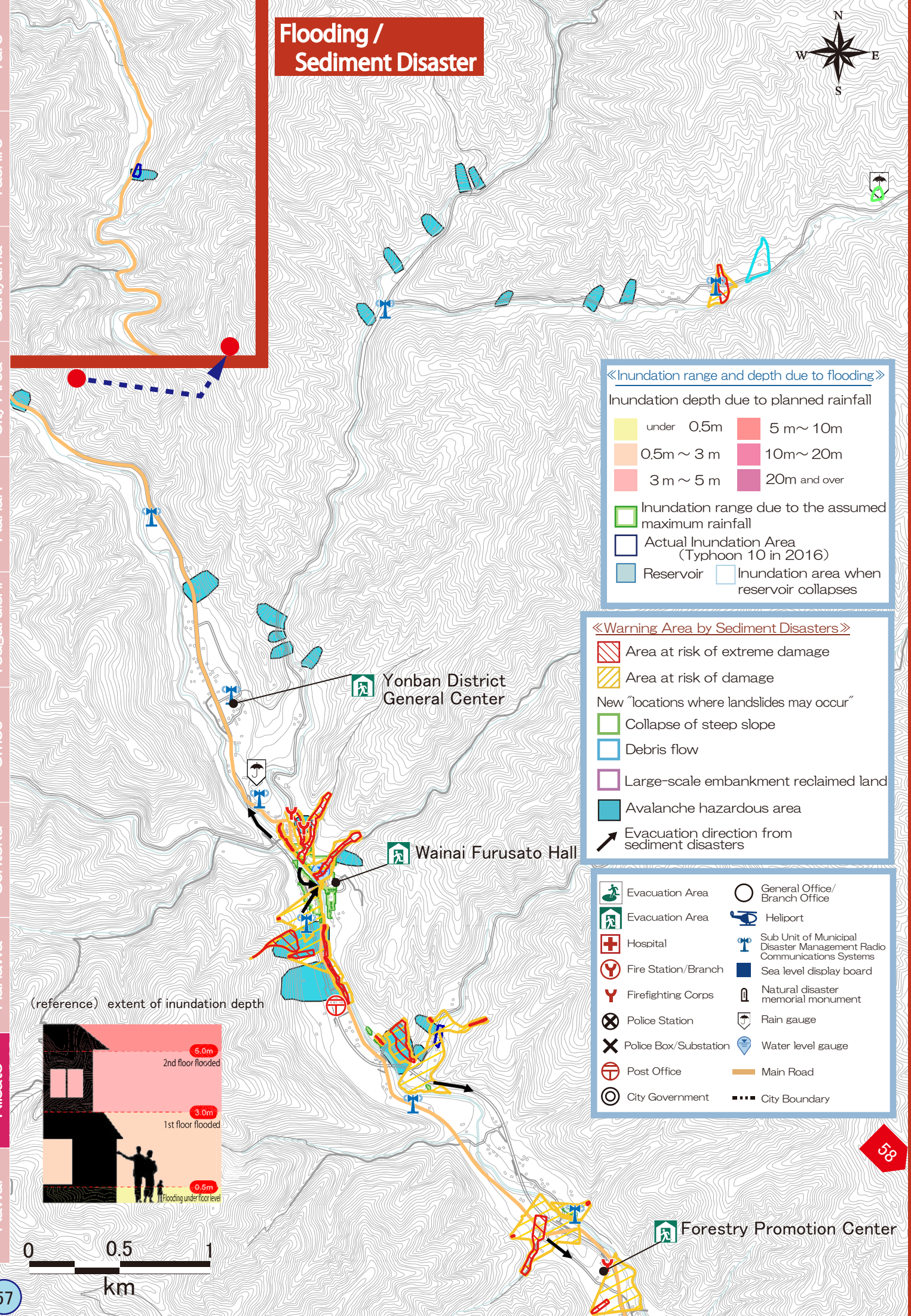
Evacuation direction from sediment disasters

Evacuation Area	General Office/ Branch Office
Evacuation Area	Heliport
Hospital	Sub Unit of Municipal Disaster Management Radio Communications Systems
Fire Station/Branch	Sea level display board
Firefighting Corps	Natural disaster memorial monument
Police Station	Rain gauge
Police Box/Substation	Water level gauge
Post Office	Main Road
City Government	City Boundary





# Flooding / Sediment Disaster



Taro  
Tashiro  
Sakiyama  
City Area  
Kanan  
Tsugaruishi  
Omoe  
Sentoku  
Hanawa  
Nisato  
Kawai

Taro  
Tashiro  
Sakiyama  
City Area  
Kanan  
Tsugaruishi  
Omoe  
Sentoku  
Hanawa  
Nisato  
Kawai



# Flooding / Sediment Disaster

## «Inundation range and depth due to flooding»

Inundation depth due to planned rainfall

- under 0.5m
- 0.5m ~ 3m
- 3m ~ 5m
- 5m ~ 10m
- 10m ~ 20m
- 20m and over

  Inundation range due to the assumed maximum rainfall

  Actual Inundation Area (Typhoon 10 in 2016)

  Reservoir   Inundation area when reservoir collapses

## «Warning Area by Sediment Disasters»

  Area at risk of extreme damage

  Area at risk of damage

  New "locations where landslides may occur"

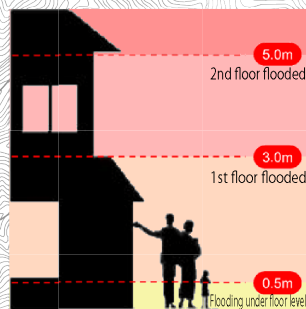
  Collapse of steep slope

  Debris flow

  Large-scale embankment reclaimed land

Evacuation direction from sediment disasters

(reference) extent of inundation depth



67

68

58

58

39

41



- Evacuation Area
- Evacuation Area
- Hospital
- Fire Station/Branch
- Firefighting Corps
- Police Station
- Police Box/Substation
- Post Office
- City Government
- General Office/Branch Office
- Heliport
- Sub Unit of Municipal Disaster Management Communications Systems
- Sea level display board
- Natural disaster memorial monument
- Rain gauge
- Water level gauge
- Main Road
- City Boundary

Taro  
Tashiro  
Sakyama  
City Area  
Kanan  
Tsugaruishi  
Omoie  
Sentoku  
Hanawa  
Niisato  
Kawai

Taro  
Tashiro  
Sakyama  
City Area  
Kanan  
Tsugaruishi  
Omoie  
Sentoku  
Hanawa  
Niisato  
Kawai

59

60