

Flooding / Sediment Disaster



«Warning Area by Sediment Disasters»

- Area at risk of extreme damage
- Area at risk of damage
- New "locations where landslides may occur"
- Collapse of steep slope
- Debris flow
- Large-scale embankment reclaimed land
- Avalanche hazardous area
- Evacuation direction from sediment disasters

Evacuation Area	General Office/ Branch Office
Evacuation Area	Heliport
Hospital	Sub Unit of Municipal Disaster Management Radio Communications Systems
Fire Station/Branch	Sea level display board
Firefighting Corps	Natural disaster memorial monument
Police Station	Rain gauge
Police Box/Substation	Water level gauge
Post Office	Main Road
City Government	City Boundary

Kuzakai Housing Complex Meeting House

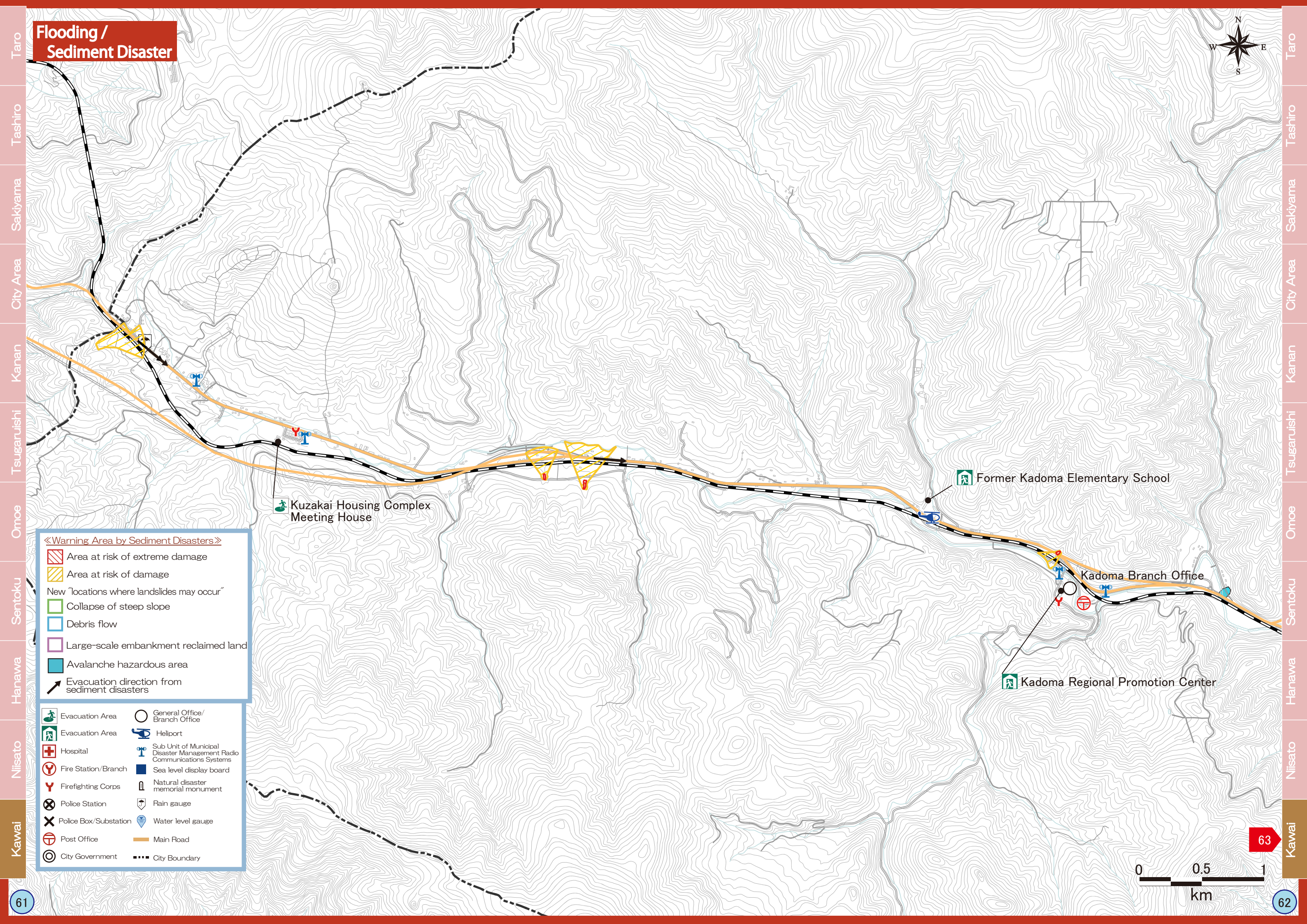
Former Kadoma Elementary School

Kadoma Branch Office

Kadoma Regional Promotion Center



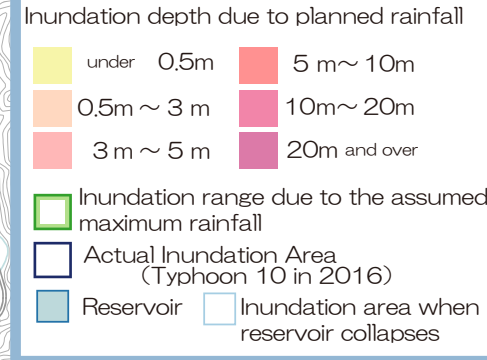
63



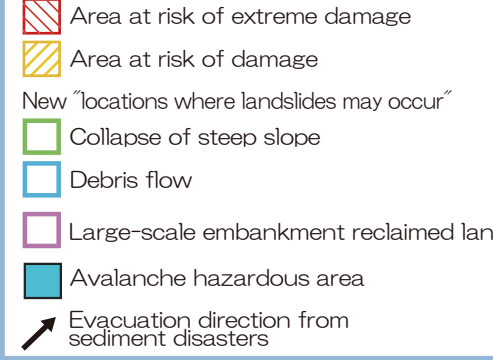
Flooding / Sediment Disaster



«Inundation range and depth due to flooding»

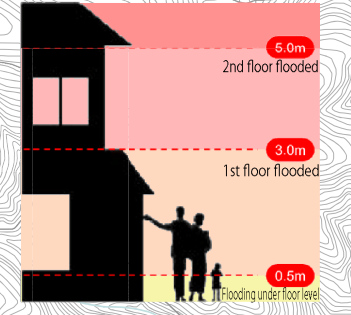


«Warning Area by Sediment Disasters»



Hiratsuto Meeting House

(reference) extent of inundation depth



Taro
Tashiro
Sakiyama
City Area
Kanan
Tsugaruishi
Omoe
Sentoku
Hanawa
Nisato
Kawai

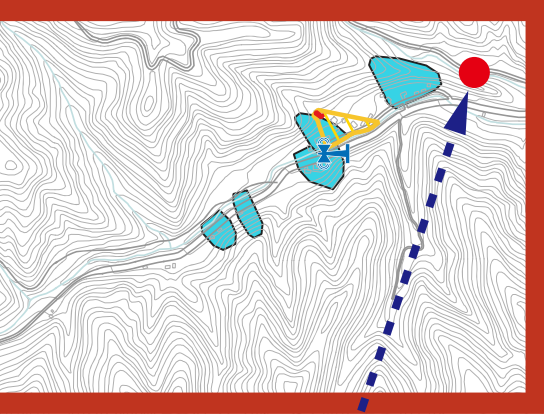
Taro
Tashiro
Sakiyama
City Area
Kanan
Tsugaruishi
Omoe
Sentoku
Hanawa
Nisato
Kawai

62

66

65

Flooding / Sediment Disaster



Natsuya Meeting House

Yakushinuri Urushi Crafts Center

Kawauchi Branch Office

Kawai Junior High School

Okamura Meeting House

Hakoishi Regional Promotion Center

64

67

Warning Area by Sediment Disasters

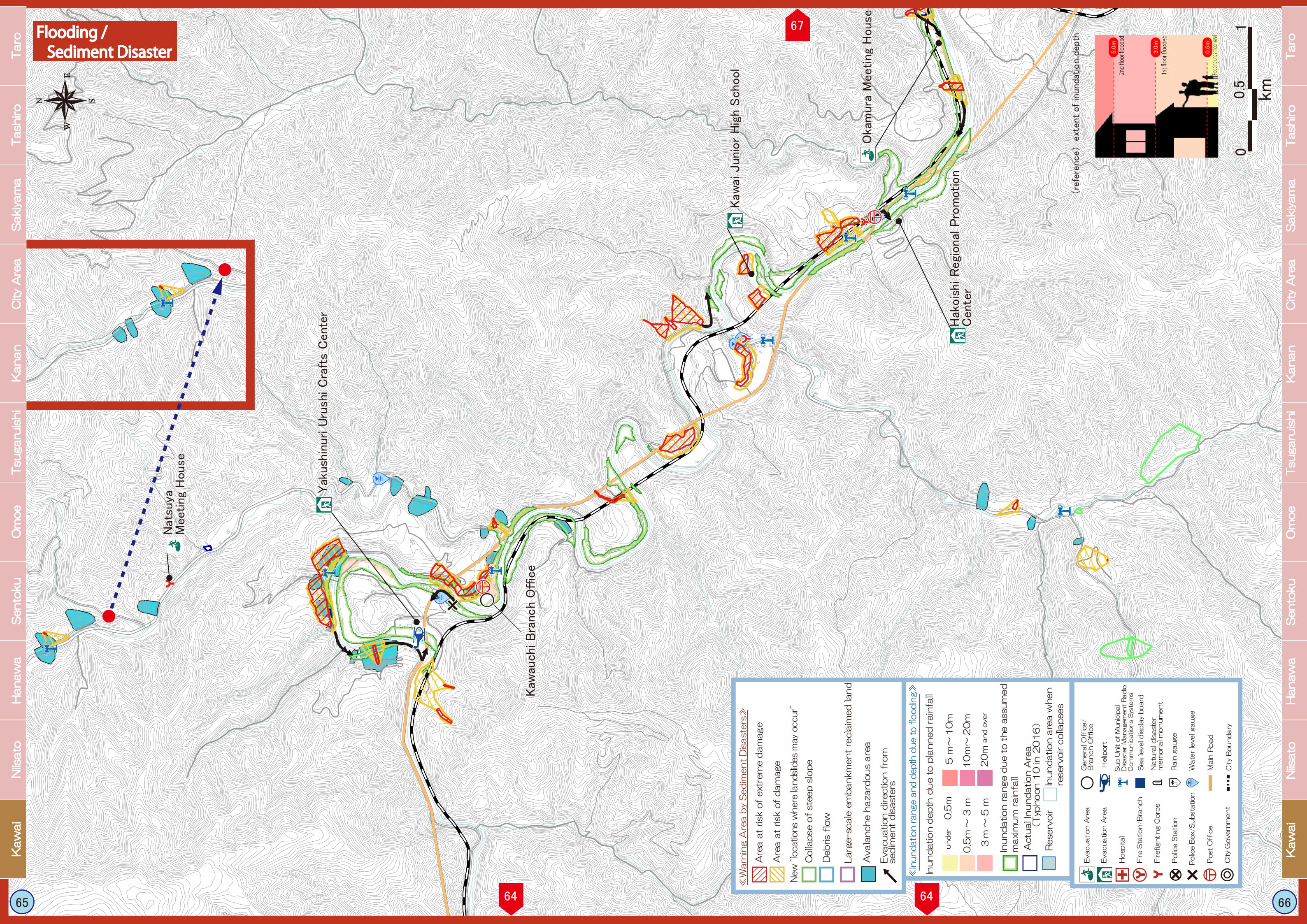
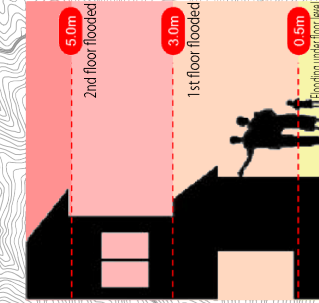
- Area at risk of extreme damage
- Area at risk of damage
- New "locations where landslides may occur"
- Collapse of steep slope
- Debris flow
- Large-scale embankment reclaimed land
- Avalanche hazardous area
- Evacuation direction from sediment disasters

Inundation range and depth due to planned rainfall

- under 0.5m
- 0.5m ~ 3 m
- 3 m ~ 5 m
- 5 m ~ 10m
- 10m ~ 20m
- 20m and over
- Inundation range due to the assumed maximum rainfall
- Actual Inundation Area (Typhoon 10 in 2016)
- Reservoir
- Inundation area when reservoir collapses

- Evacuation Area
- General Office/Branch Office
- Hospital
- Heliport
- Fire Station/Branch
- Sub Unit of Municipal Disaster Management Radio Communications Systems
- Firefighting Corps
- Sea level display board
- Police Station
- Natural disaster memorial monument
- Police Box/Substation
- Rain gauge
- Post Office
- Water level gauge
- City Government
- Main Road
- City Boundary

(reference) extent of inundation depth



Flooding / Sediment Disaster



59

59

69

67

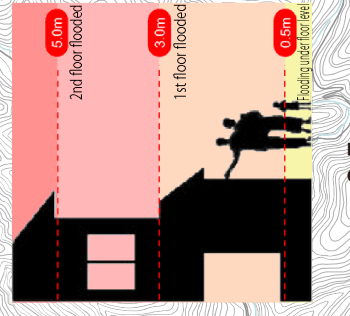
66

72

68

<<Inundation range and depth due to flooding>>
 Inundation depth due to planned rainfall
 under 0.5m 5 m ~ 10m
 0.5m ~ 3 m 10m ~ 20m
 3 m ~ 5 m 20m and over
 Inundation range due to the assumed maximum rainfall
 Actual Inundation Area (Typhoon 10 in 2016)
 Reservoir Inundation area when reservoir collapses

<<Warning Area by Sediment Disasters>>
 Area at risk of extreme damage
 Area at risk of damage
 New "locations where landslides may occur"
 Collapse of steep slope
 Debris flow
 Large-scale embankment reclaimed land
 Evacuation direction from sediment disasters



(reference) extent of inundation depth

Okamura Meeting House

Shimokawai Meeting House

Kawai Lifelong Learning Center

Kawai General Office

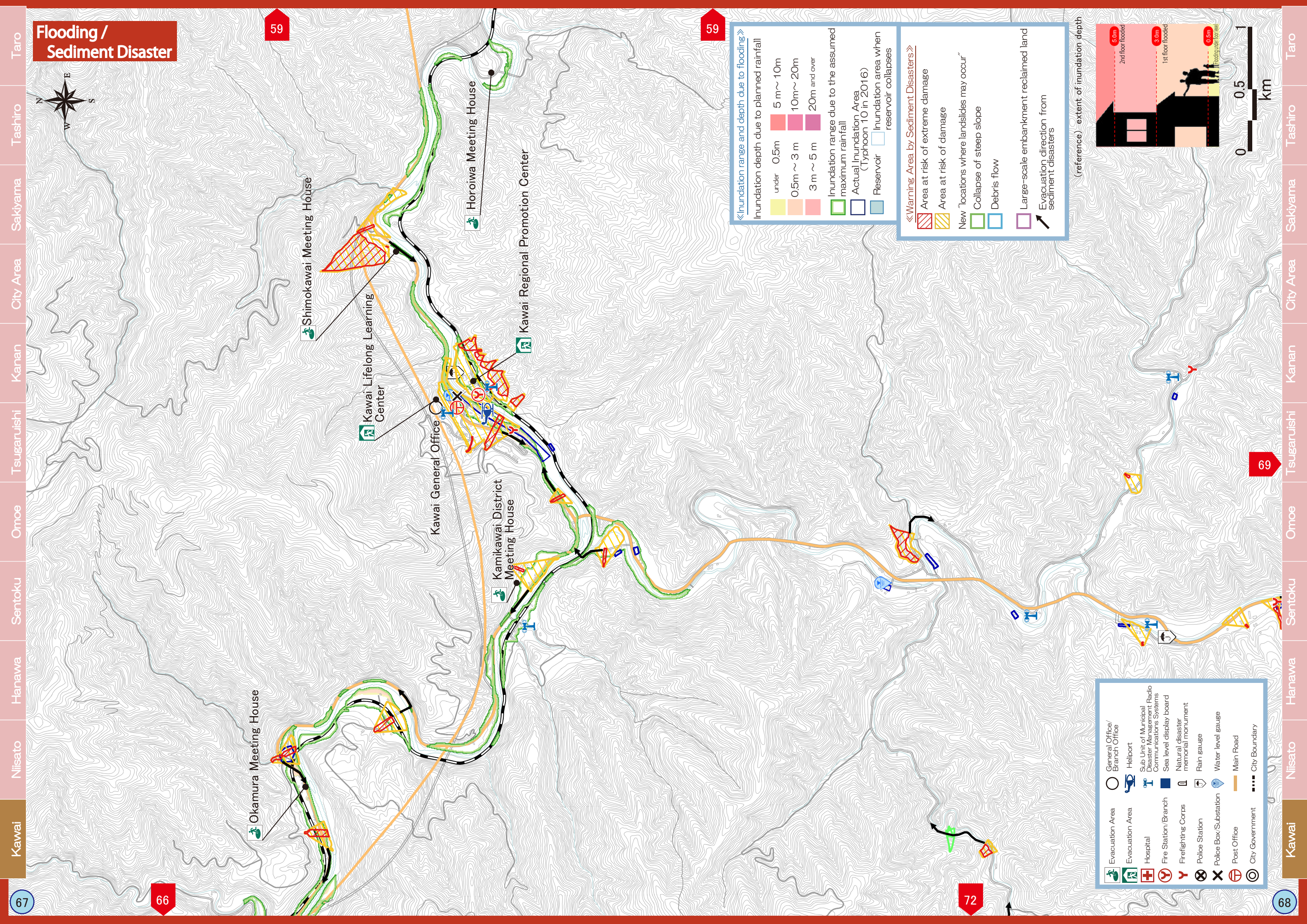
Kamikawai District Meeting House

Horoiwa Meeting House

Kawai Regional Promotion Center

Evacuation Area
 Hospital
 Fire Station/Branch
 Firefighting Corps
 Police Station
 Police Box/Substation
 Post Office
 City Government

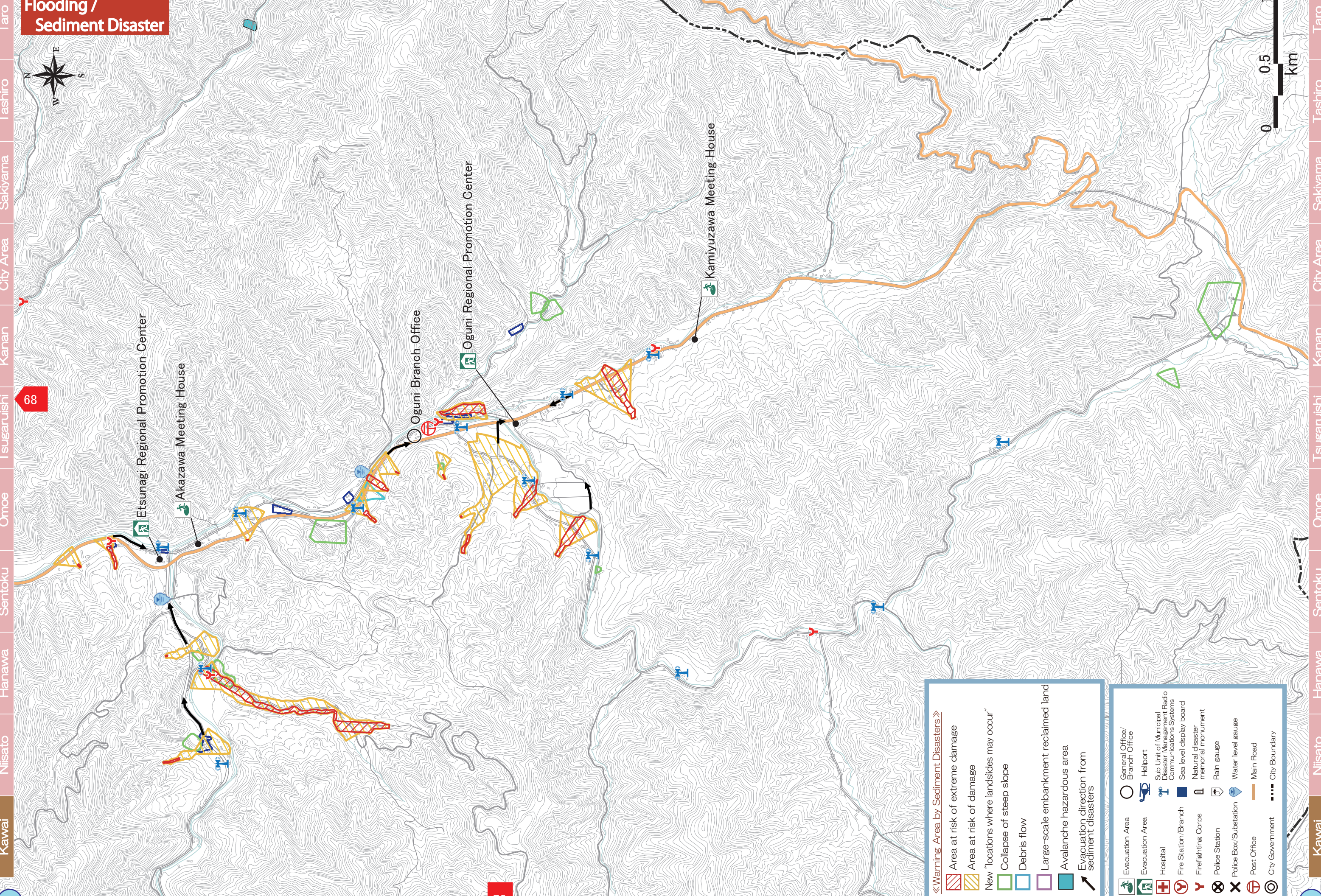
General Office/Branch Office
 Heliport
 Sub Unit of Municipal Disaster Management Systems
 Communications Systems
 Sea level display board
 Natural disaster memorial monument
 Rain gauge
 Water level gauge
 Main Road
 City Boundary



Kawai Nisato Hanawa Sentoku Omoe Tsugaruishi Kanan City Area Sakiyama Tashiro Taro

Kawai Nisato Hanawa Sentoku Omoe Tsugaruishi Kanan City Area Sakiyama Tashiro Taro

Flooding / Sediment Disaster



«Warning Area by Sediment Disasters»

- Area at risk of extreme damage
- Area at risk of damage
- New "locations where landslides may occur"
- Collapse of steep slope
- Debris flow
- Large-scale embankment reclaimed land
- Avalanche hazardous area
- Evacuation direction from sediment disasters

- Evacuation Area
- Evacuation Area
- Hospital
- Fire Station/Branch
- Firefighting Corps
- Police Station
- Police Box/Substation
- Post Office
- City Government
- General Office/Branch Office
- Helipoint
- Sub Unit of Municipal Disaster Management Radio Communications Systems
- Sea level display board
- Natural disaster memorial monument
- Rain gauge
- Water level gauge
- Main Road
- City Boundary

Kawai Nisato Hanawa Sentoku Omoe Tsugaruishi Kanan City Area Sakiyama Tashiro Taro

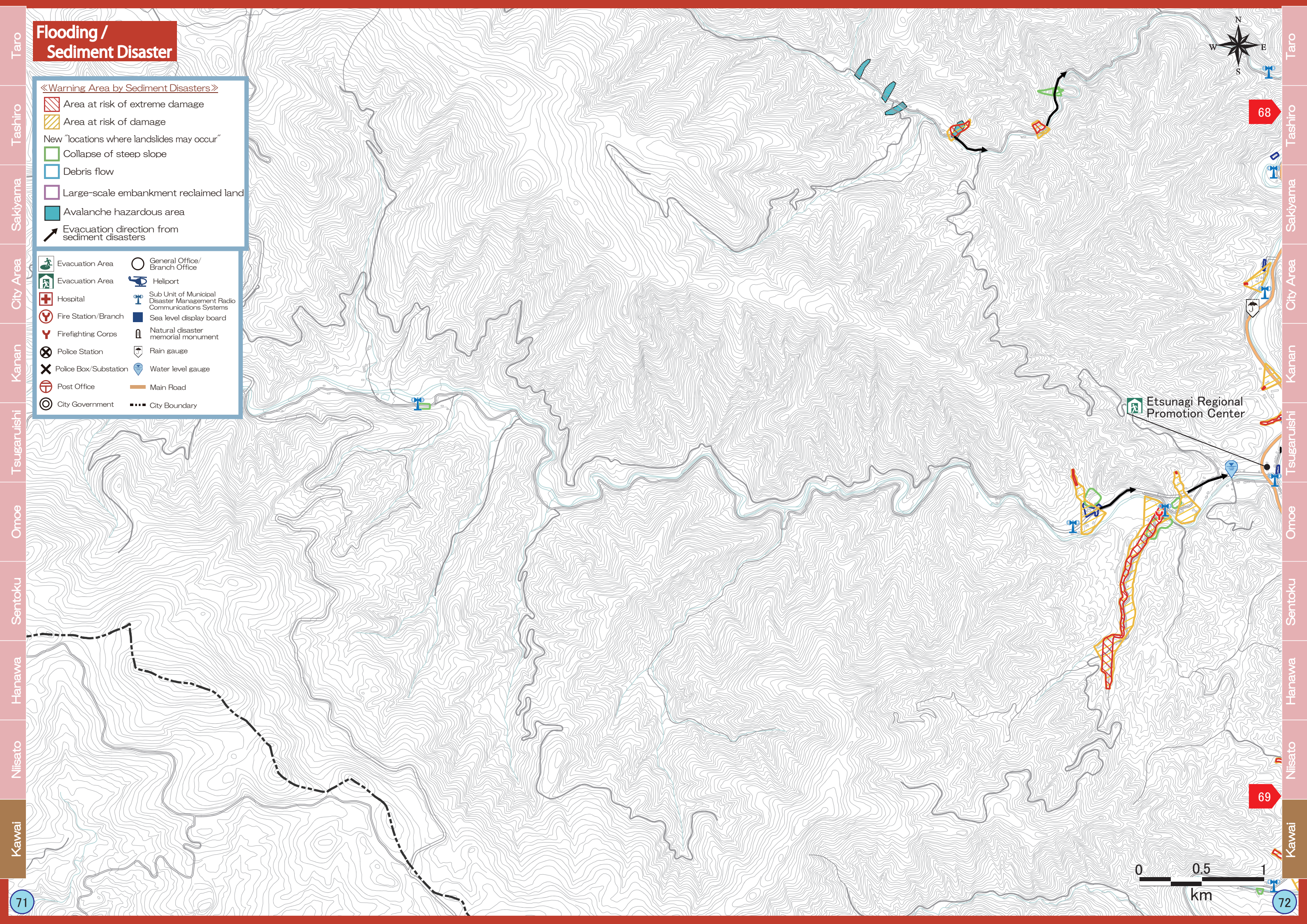
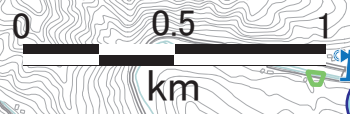
Kawai Nisato Hanawa Sentoku Omoe Tsugaruishi Kanan City Area Sakiyama Tashiro Taro

Flooding / Sediment Disaster

«Warning Area by Sediment Disasters»

- Area at risk of extreme damage
- Area at risk of damage
- New "locations where landslides may occur"
- Collapse of steep slope
- Debris flow
- Large-scale embankment reclaimed land
- Avalanche hazardous area
- Evacuation direction from sediment disasters

Evacuation Area	General Office/ Branch Office
Evacuation Area	Heliport
Hospital	Sub Unit of Municipal Disaster Management Radio Communications Systems
Fire Station/Branch	Sea level display board
Firefighting Corps	Natural disaster memorial monument
Police Station	Rain gauge
Police Box/Substation	Water level gauge
Post Office	Main Road
City Government	City Boundary



Taro
Tashiro
Sakiyama
City Area
Kanan
Tsugaruishi
Omoe
Sentoku
Hanawa
Nisato
Kawai

Taro
Tashiro
Sakiyama
City Area
Kanan
Tsugaruishi
Omoe
Sentoku
Hanawa
Nisato
Kawai