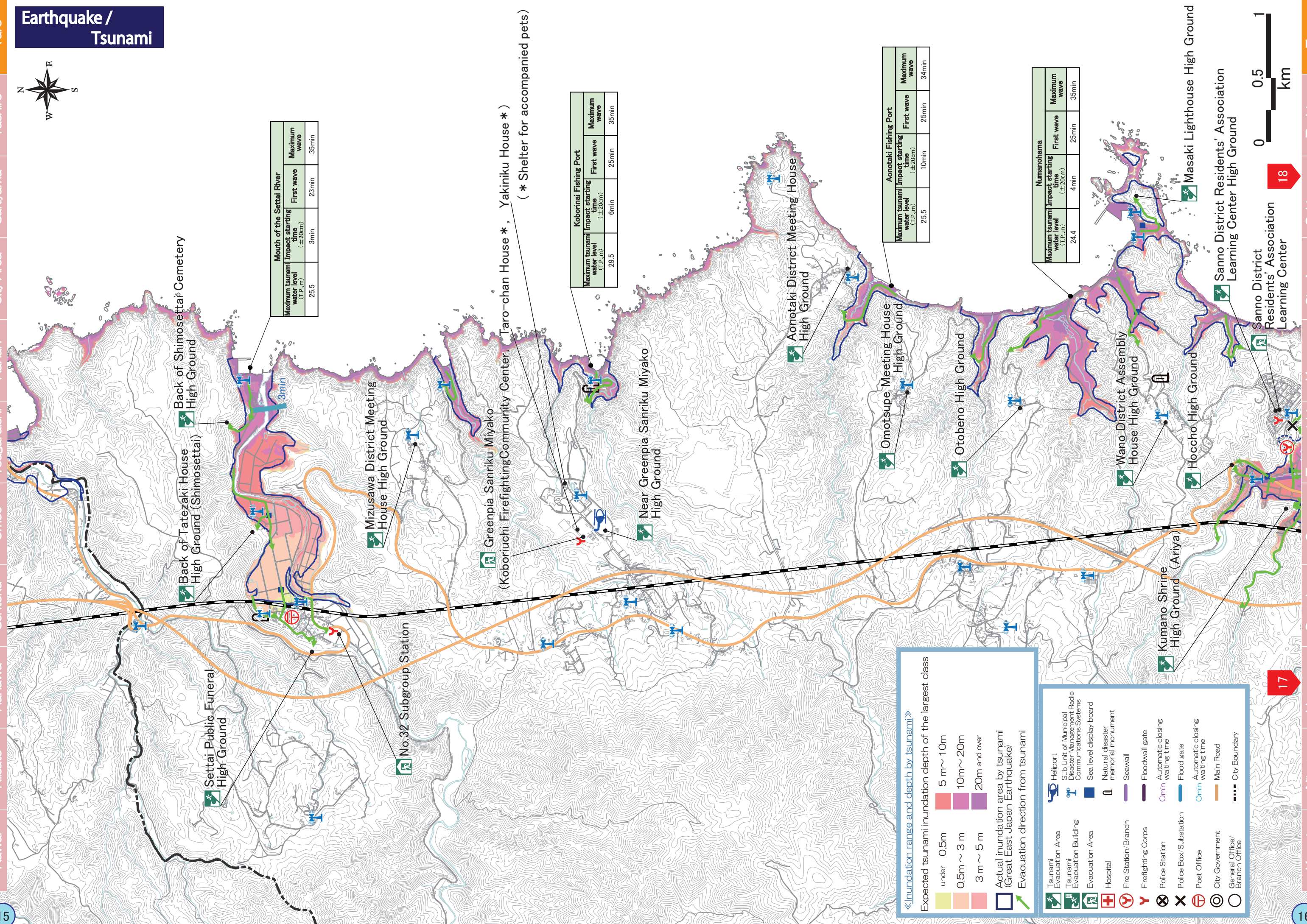


Earthquake / Tsunami



Mouth of the Settai River		
Maximum tsunami water level (T.P.,m)	25.5	
Impact starting time (±20cm)	3min	
First wave	23min	
Maximum wave	35min	

Koborinai Fishing Port		
Maximum tsunami water level (T.P.,m)	29.5	
Impact starting time (±20cm)	6min	
First wave	25min	
Maximum wave	35min	

Aonotaki Fishing Port		
Maximum tsunami water level (T.P.,m)	25.5	
Impact starting time (±20cm)	10min	
First wave	25min	
Maximum wave	34min	

Numanohama		
Maximum tsunami water level (T.P.,m)	24.4	
Impact starting time (±20cm)	4min	
First wave	25min	
Maximum wave	35min	

Expected tsunami inundation depth of the largest class

- under 0.5m
- 0.5m ~ 3m
- 3m ~ 5m
- 5m ~ 10m
- 10m ~ 20m
- 20m and over

Actual inundation area by tsunami (Great East Japan Earthquake)

Evacuation direction from tsunami

Tsunami Evacuation Area

- Heliport
- Sub Unit of Municipal Disaster Management Radio Communications Systems
- Sea level display board
- Natural disaster memorial monument
- Seawall
- Floodwall gate
- Automatic closing waiting time
- Flood gate
- Automatic closing waiting time
- City Government
- General Office/Branch Office

Hospital

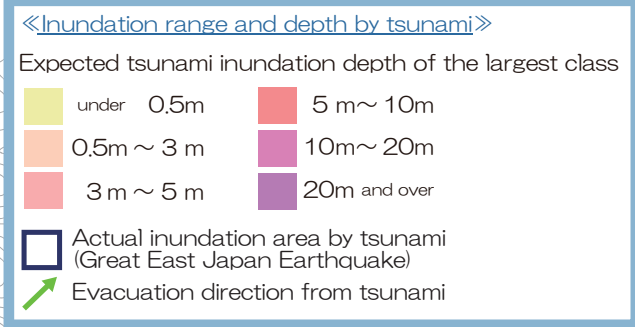
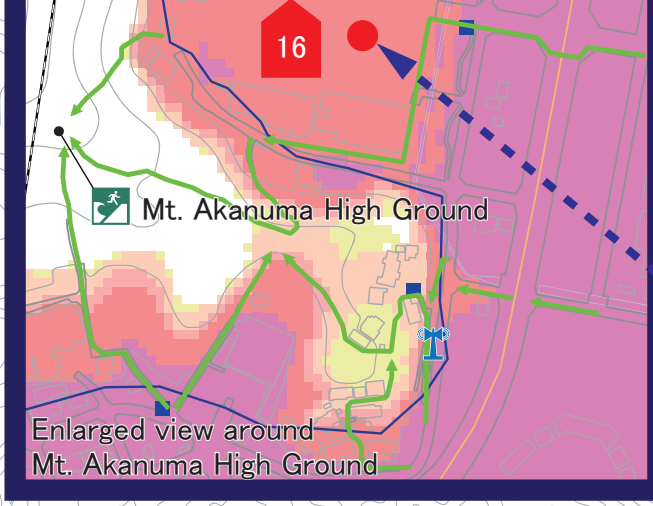
- Fire Station/Branch
- Firefighting Corps
- Police Station
- Police Box/Substation
- Post Office

Other

- Main Road
- City Boundary

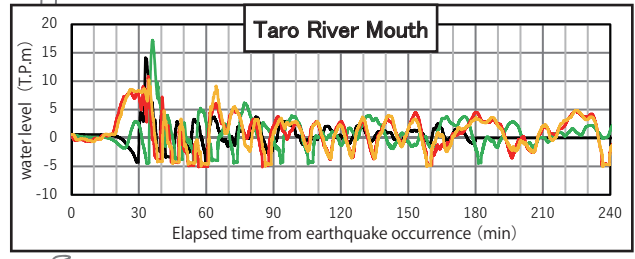
(* Shelter for accompanied pets)

Earthquake / Tsunami



- Tsunami Evacuation Area
- Tsunami Evacuation Building
- Evacuation Area
- Hospital
- Fire Station/Branch
- Firefighting Corps
- Police Station
- Police Box/Substation
- Post Office
- City Government
- General Office/Branch Office
- Heliport
- Sub Unit of Municipal Disaster Management Radio Communications Systems
- Sea level display board
- Natural disaster memorial monument
- Seawall
- Floodwall gate
- Automatic closing waiting time (0min)
- Flood gate
- Automatic closing waiting time (0min)
- Main Road
- City Boundary

Maximum tsunami water level (T.P.m)	Impact starting time (±20cm)	First wave	Maximum wave
17.3	8min	26min	36min



Time evolution graph of tsunami water level for the largest class of tsunamis

- Meiji Sanriku Earthquake
- The Pacific coast of Tohoku Earthquake
- Japan Trench Model (off Sanriku)
- Japan Trench Model (off Hidaka)

※The model shows calculation patterns for different earthquake initiation locations.

*** Note**
Estimated inundation area due to assumed tsunami shown in the map is based on the condition before reconstruction and community development projects are completed.



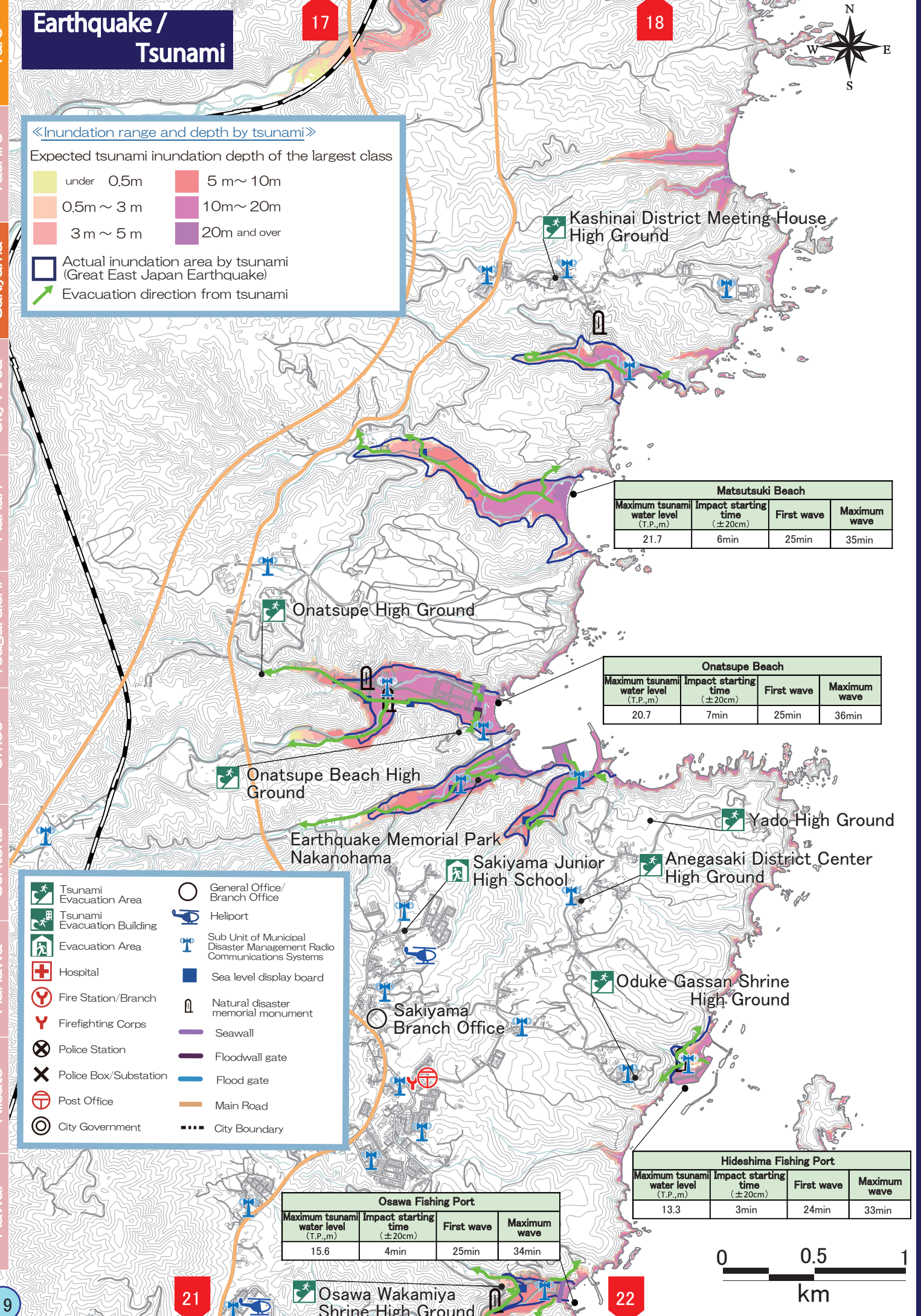
Earthquake / Tsunami

Expected tsunami inundation depth of the largest class

under 0.5m	5 m ~ 10m
0.5m ~ 3 m	10m ~ 20m
3 m ~ 5 m	20m and over

Actual inundation area by tsunami (Great East Japan Earthquake)

Evacuation direction from tsunami



Matsutsuki Beach			
Maximum tsunami water level (T.P.,m)	Impact starting time (±20cm)	First wave	Maximum wave
21.7	6min	25min	35min

Onatsupe Beach			
Maximum tsunami water level (T.P.,m)	Impact starting time (±20cm)	First wave	Maximum wave
20.7	7min	25min	36min

Hideshima Fishing Port			
Maximum tsunami water level (T.P.,m)	Impact starting time (±20cm)	First wave	Maximum wave
13.3	3min	24min	33min

Osawa Fishing Port			
Maximum tsunami water level (T.P.,m)	Impact starting time (±20cm)	First wave	Maximum wave
15.6	4min	25min	34min

Earthquake / Tsunami

Expected tsunami inundation depth of the largest class

under 0.5m	5 m ~ 10m
0.5m ~ 3 m	10m ~ 20m
3 m ~ 5 m	20m and over

Actual inundation area by tsunami (Great East Japan Earthquake)

Evacuation direction from tsunami

